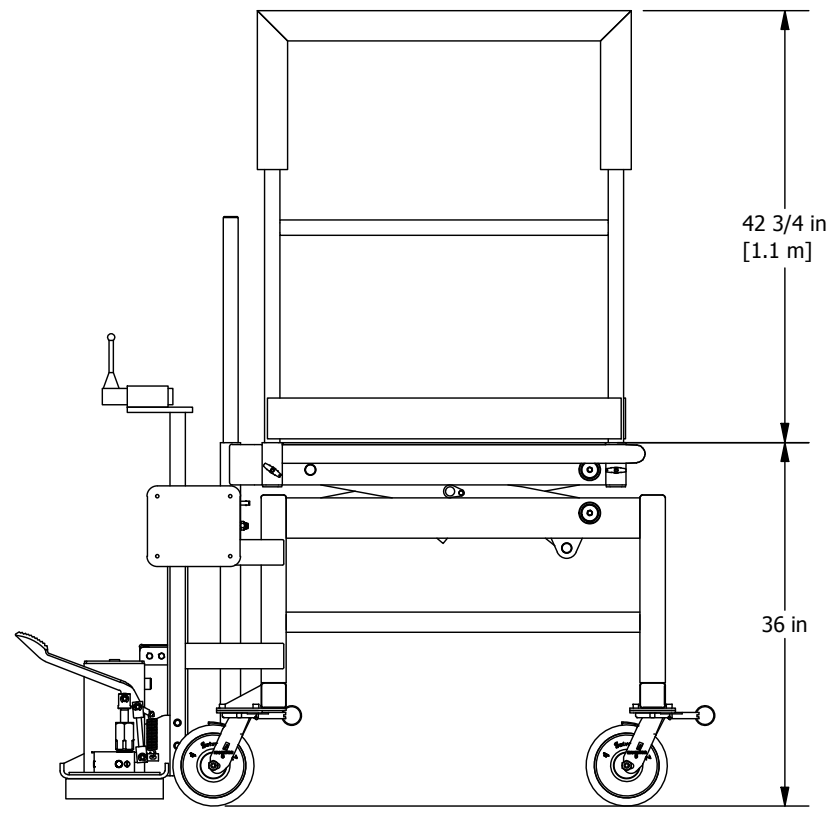
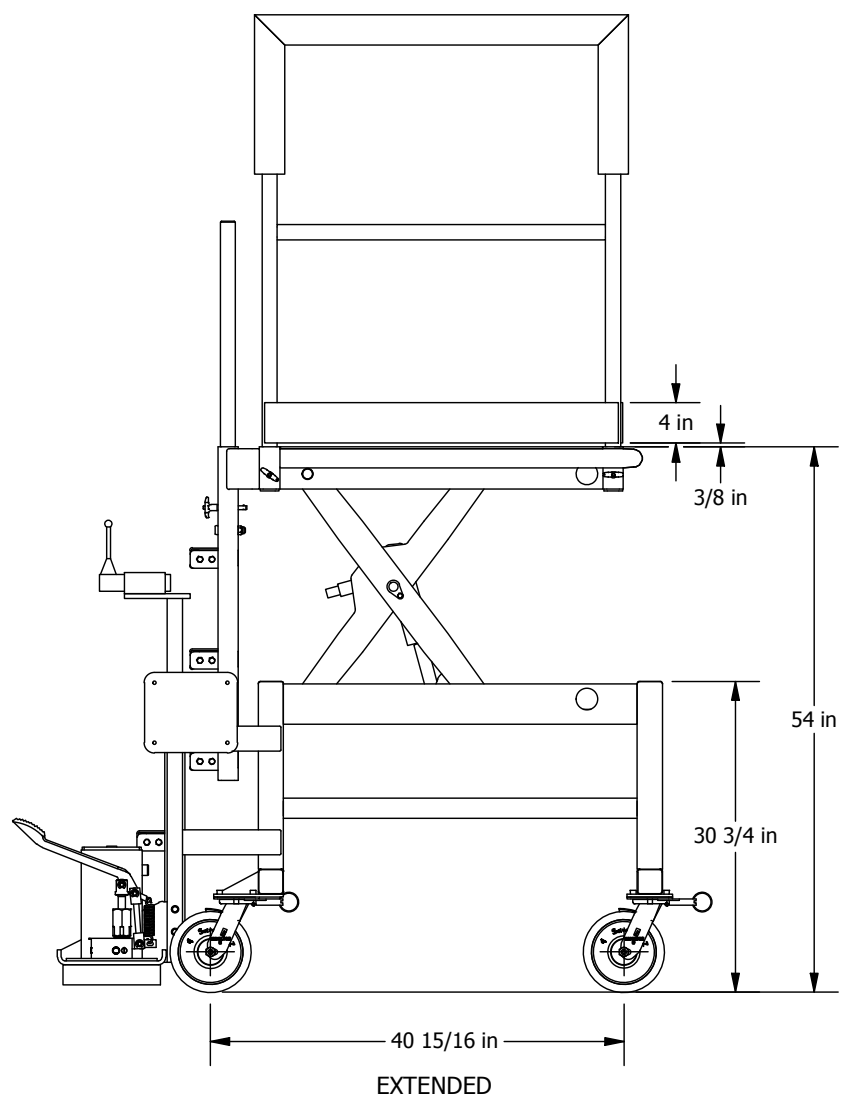
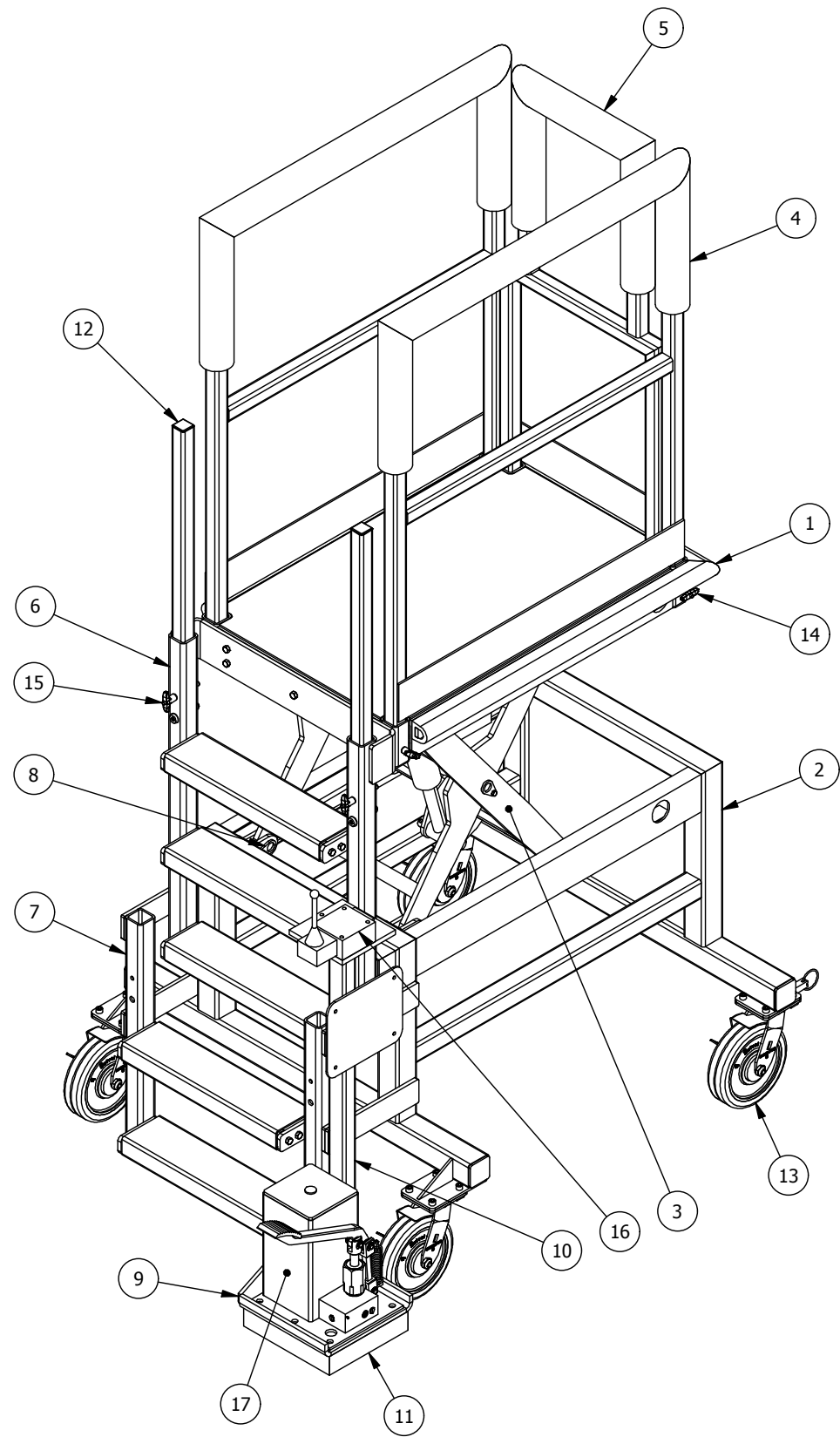


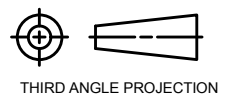
REVISION HISTORY			
REV	DESCRIPTION	DATE	APPROVED
0	ISSUED FOR PRODUCTION	11/26/2019	R.B




PARTS LIST				
ITEM	PART NUMBER	DESCRIPTION	MATERIAL	QTY
1	V04201	PLATFORM WELDMENT		1
2	V04410	BASE WELDMENT		1
3	V04590	SCISSOR ASSEMBLY		1
4	V04240	REMOVEABLE SIDE RAIL	Aluminum	2
5	V04250	REMOVEABLE END RAIL	Aluminum	1
6	V04414	INSIDE LADDER ASSEMBLY		1
7	V04413	OUTSIDE LADDER ASSEMBLY		1
8	V04555	STUB SHAFT KEEPER PLATE WELDMENT (1" DIA. SHAFT)		4
9	V04561	FOOT PUMP MOUNTING WELDMENT		1
10	V04586	VALVE & DOCUMENT HOLDER STAND		1
11	V04610	HYDRAULIC STAND SPACING WELDMENT	Aluminum	1
12	9565K170	TUBE CAP	Plastic	2
13	V03779	S-528-SWF-CB - SWIVEL CASTER w/ BRAKE & SWIVEL LOCK (HAMILTON CASTER)		4
14	V04421	PIN,KLP T-HANDLE 3/8" DIA. x 4.50" LG. SST		2
15	V04509	PIN,KLP T-HANDLE 3/8" DIA. x 2.50" LG. SST		4
16	V01600	Directional Control Valve CTI # CTMB3/1S		1
17	V04597	FOOT PUMP; STAR HYD#MK30008 1 GAL TANK. 3/4" PISTON		1

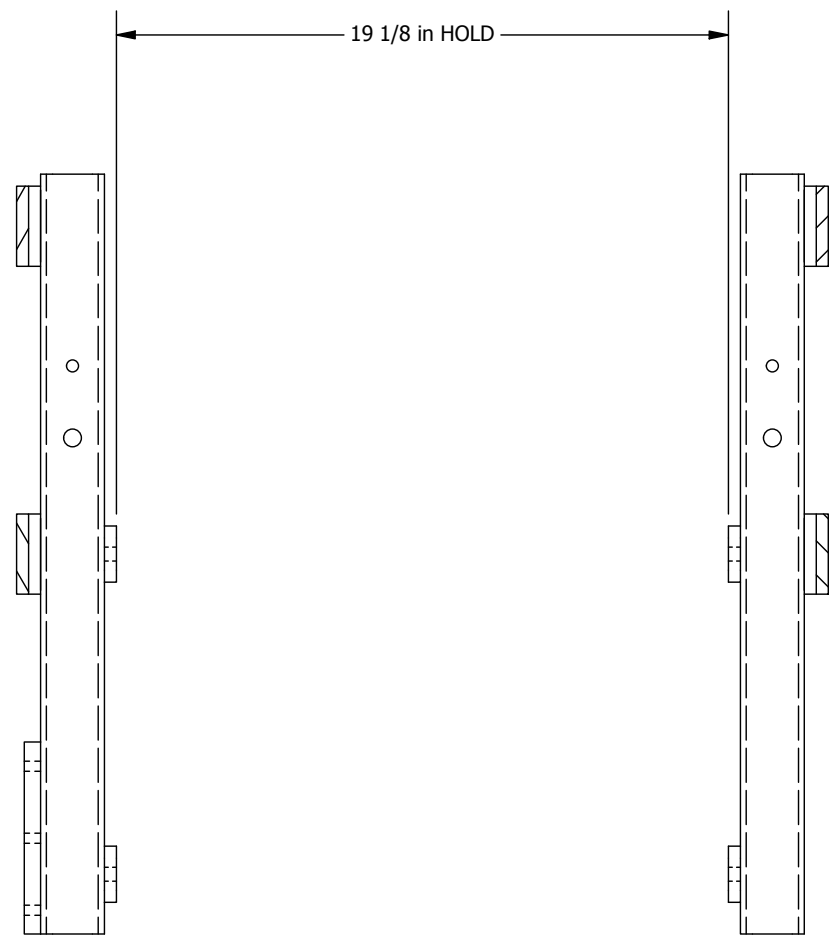
GENERAL NOTES:
 1) ALL STRUCTURAL STEEL SECTIONS SHALL CONFORM TO CSA G40.21-350W
 2) ALL STEEL PLATE AND BAR SHALL CONFORM TO CSA G40.21-300W
 3) ALL WELDING SHALL CONFORM TO CSA W59 AND BE UNDERTAKEN BY A WELDER FULLY APPROVED BY THE CANADIAN WELDING BUREAU TO CSA W47 DIVISION
 4) ALL WELDS TO BE SMOOTH AND FREE OF BURRS
 5) THIS DRAWING AND THE INTELLECTUAL INFORMATION ON THIS DRAWING ARE THE PROPERTY OF LIFTSAFE ENGINEERING & SERVICE GROUP INC. AND MAY NOT BE REPRODUCED OR USED IN ANY MANNER WITHOUT OUR WRITTEN CONSENT
 6) ALL WELDS TO BE 1/4" CONTINUOUS FILLET OR 1/4" EFFECTIVE THROAT FLARE BEVEL U.N.O.

THIS DRAWING AND THE INTELLECTUAL INFORMATION ON THIS DRAWING ARE THE PROPERTY OF LIFTSAFE ENGINEERING & SERVICE GROUP INC. AND MAY NOT BE REPRODUCED OR USED IN ANY MANNER WITHOUT OUR WRITTEN CONSENT

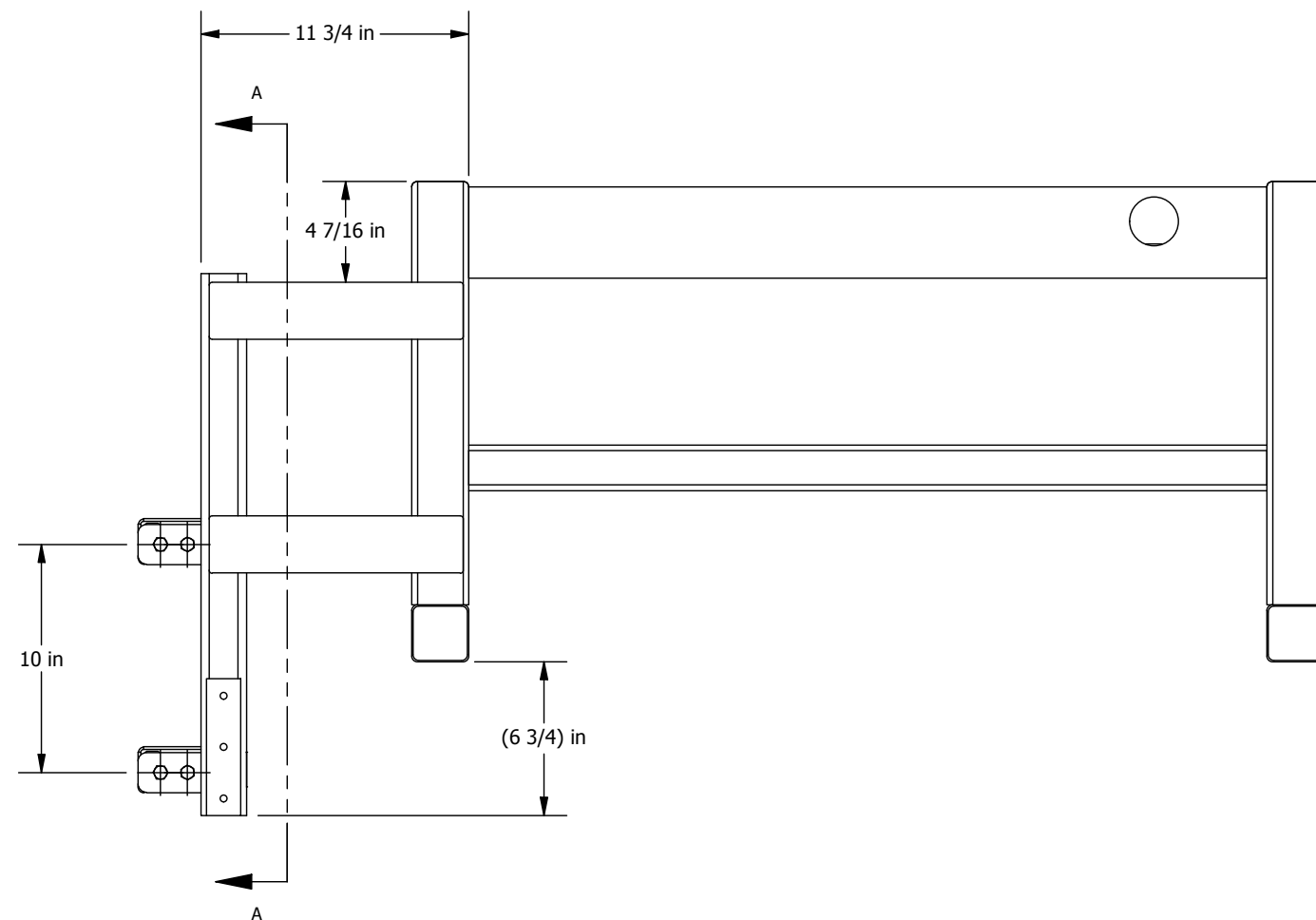


Tolerance Unless Noted Otherwise					
ANGLE	FRACTION	DECIMAL PLACES	INCHES	MILLIMETRES	
±12°	±1/16	.XXX	±.005	±0.1	
		.XX	±.010	±0.3	
		.X	±.020	±0.5	

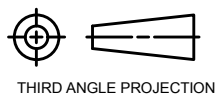
Part No. : DF071564-01		LIFTSAFE ENGINEERING & SERVICE GROUP INC.		
Materials:		www.liftsafeinspections.com T. (519) 896-2430/1-800-977-2005, Email: info@liftsafeinspections.com F. (519) 896-2085		
Weight: N/A	Customer & Location: AIRBUS HAMBURG	Project: A320 NEO SIDE SCROLL STAND		
Work Order No:	Checked By: R.B	Date: 23/10/2019	Description: GENERAL ASSEMBLY	
Designed By: D.M.	Date: 21/10/2019	SIZE: B	SCALE: 1/19	DWG NO: V04200
Drawn By: D.M.	Date: 23/10/2019	SHEET 1 OF 4		REV: 0



SECTION A-A
(STAIRS NOT SHOWN)



THIS DRAWING AND THE INTELLECTUAL INFORMATION ON THIS DRAWING ARE THE PROPERTY OF LIFTSAFE ENGINEERING & SERVICE GROUP INC. AND MAY NOT BE REPRODUCED OR USED IN ANY MANNER WITHOUT OUR WRITTEN CONSENT



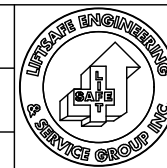
Tolerance Unless Noted Otherwise					
ANGLE	FRACTION	DECIMAL PLACES	INCHES	MILLIMETRES	
±12°	±1/16	.XXX	±.005	±0.1	
		.XX	±.010	±0.3	
		.X	±.020	±0.5	

Part No. :
DF071564-01

Materials:

Weight:
N/A

Work Order No:



LIFTSAFE ENGINEERING & SERVICE GROUP INC.

www.liftsafeinspections.com T. (519) 896-2430/1-800-977-2005,
Email: info@liftsafeinspections.com F. (519) 896-2085

Customer & Location:
AIRBUS HAMBURG

Project:
A320 NEO SIDE SCROLL STAND

Checked By: R.B. Date: 23/10/2019 Description: GENERAL ASSEMBLY

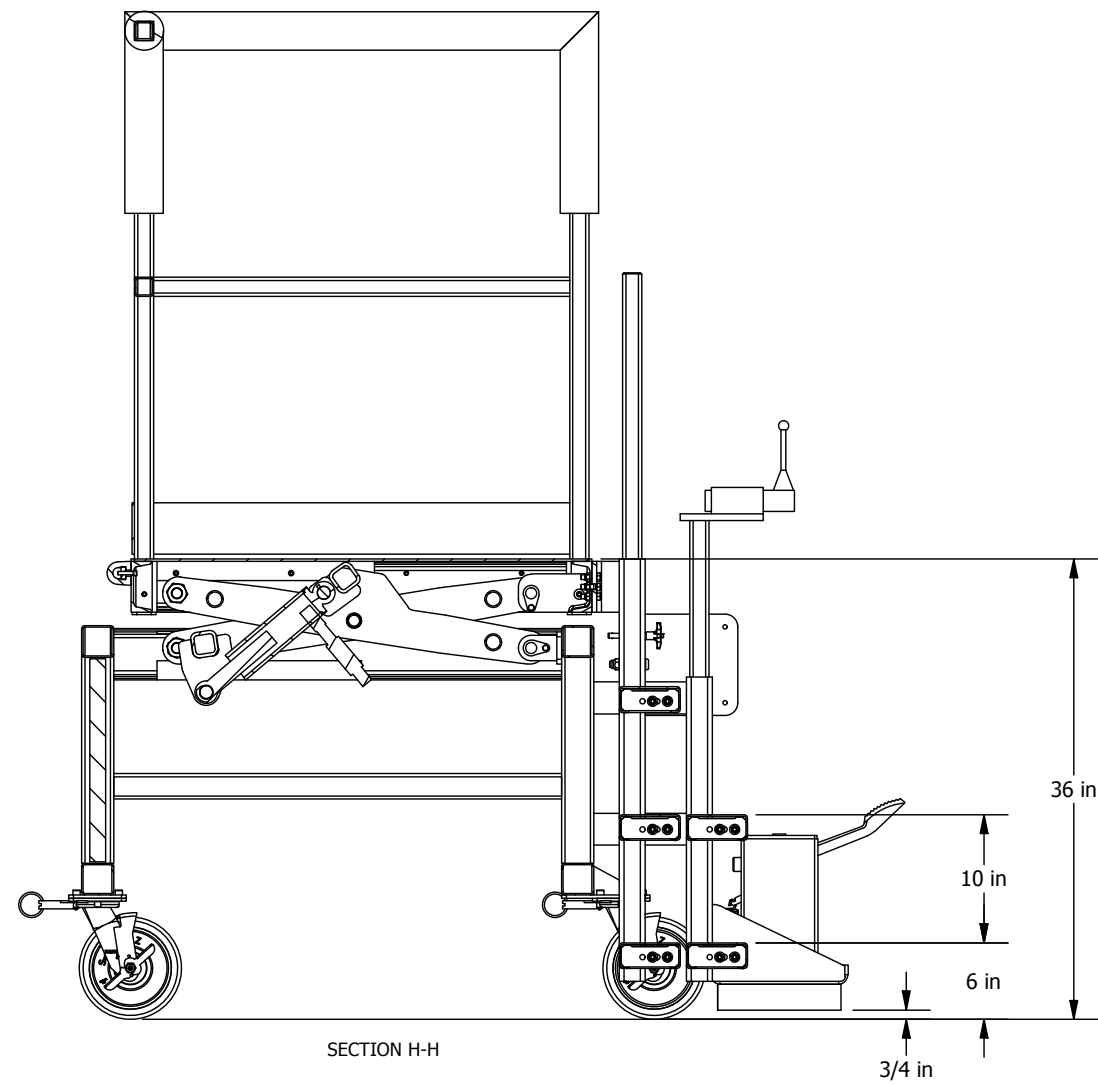
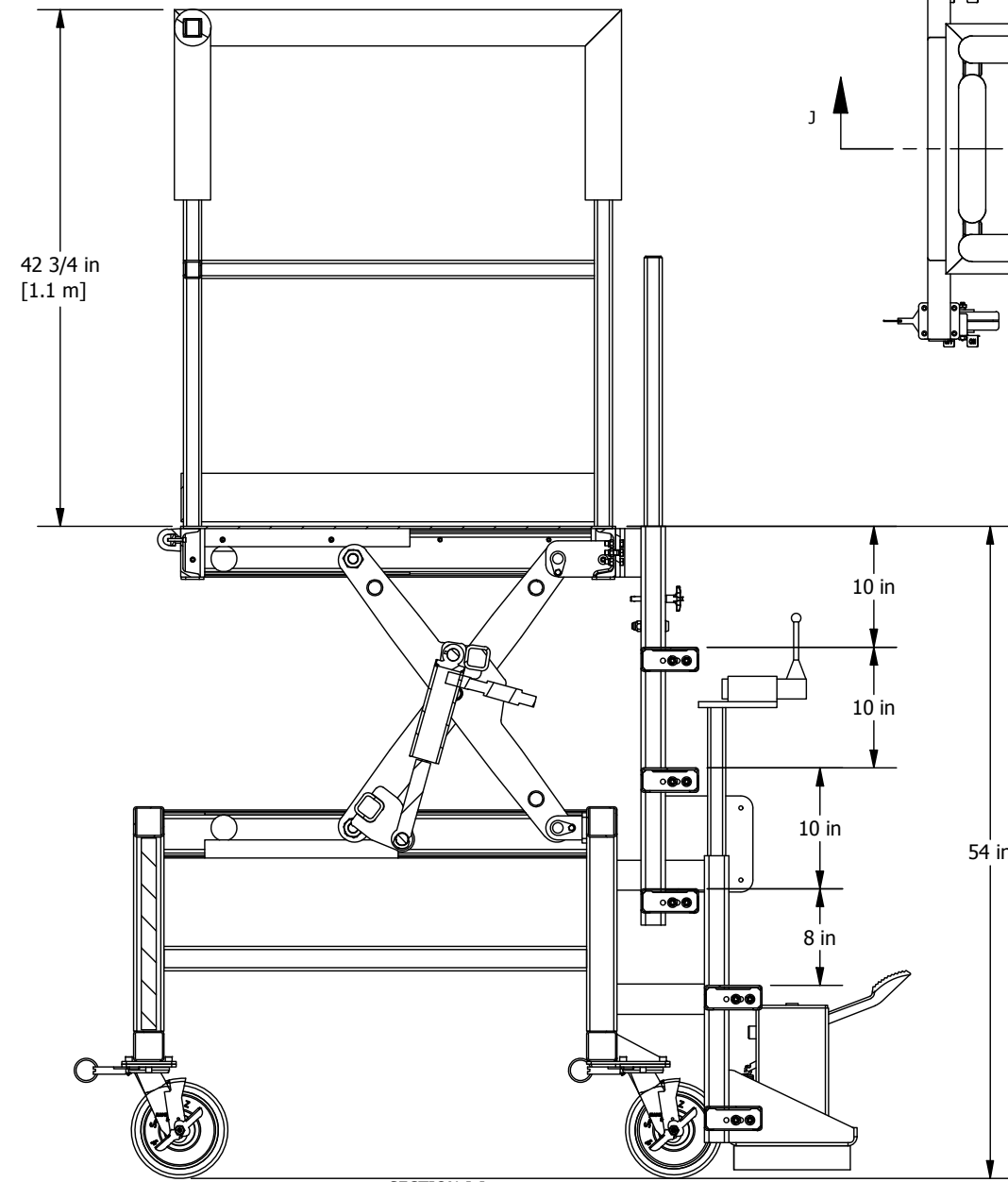
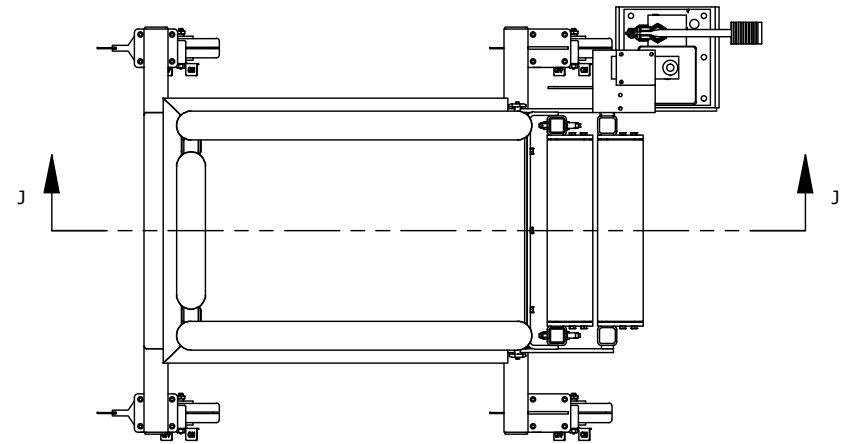
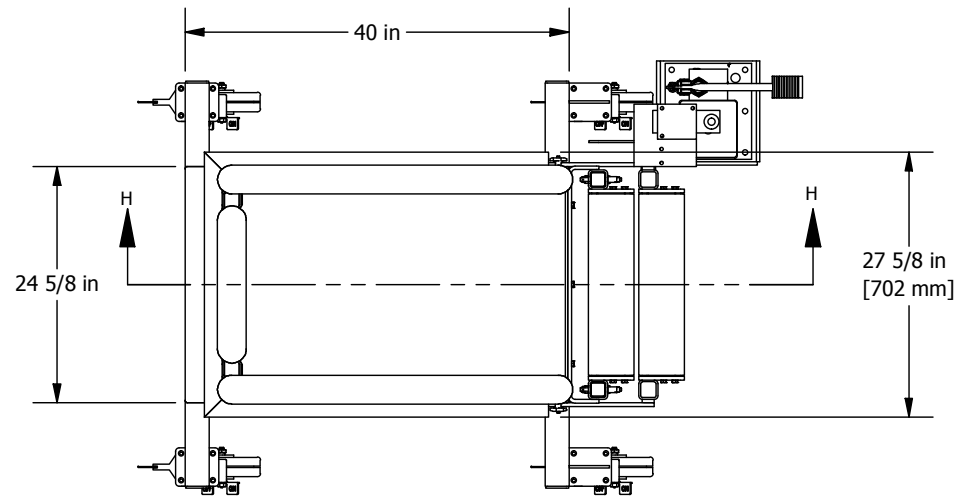
Designed By: D.M. Date: 21/10/2019

Drawn By: D.M. Date: 23/10/2019

SIZE: **B**
SCALE: 1/8
SHEET 2 OF 4

DWG NO: **V04200**

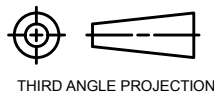
REV: **0**



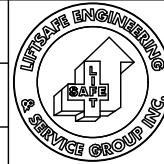
SECTION J-J

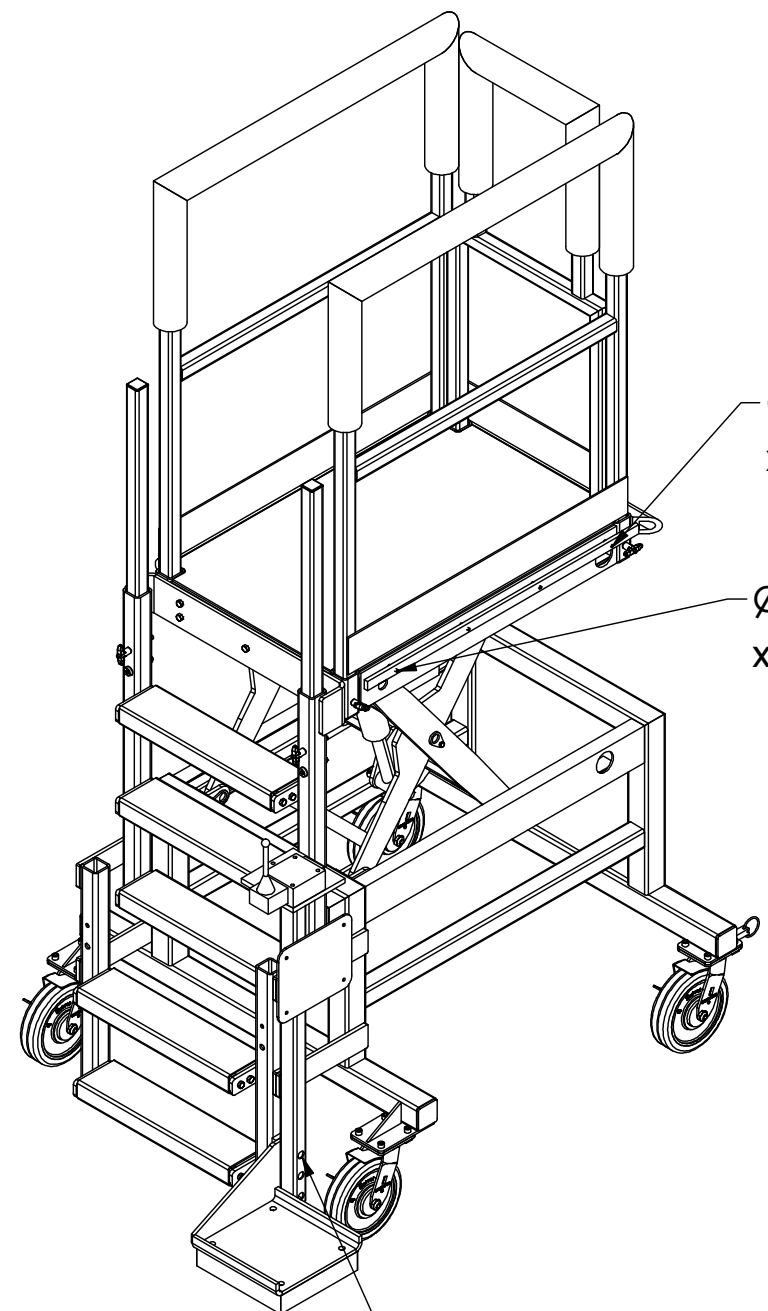
SECTION H-H

THIS DRAWING AND THE INTELLECTUAL INFORMATION ON THIS DRAWING ARE THE PROPERTY OF LIFTSAFE ENGINEERING & SERVICE GROUP INC. AND MAY NOT BE REPRODUCED OR USED IN ANY MANNER WITHOUT OUR WRITTEN CONSENT



Tolerance Unless Noted Otherwise					
ANGLE	FRACTION	DECIMAL PLACES	INCHES	MILLIMETRES	
±12°	±1/16	.XXX	±.005	±0.1	
		.XX	±.010	±0.3	
		.X	±.020	±0.5	

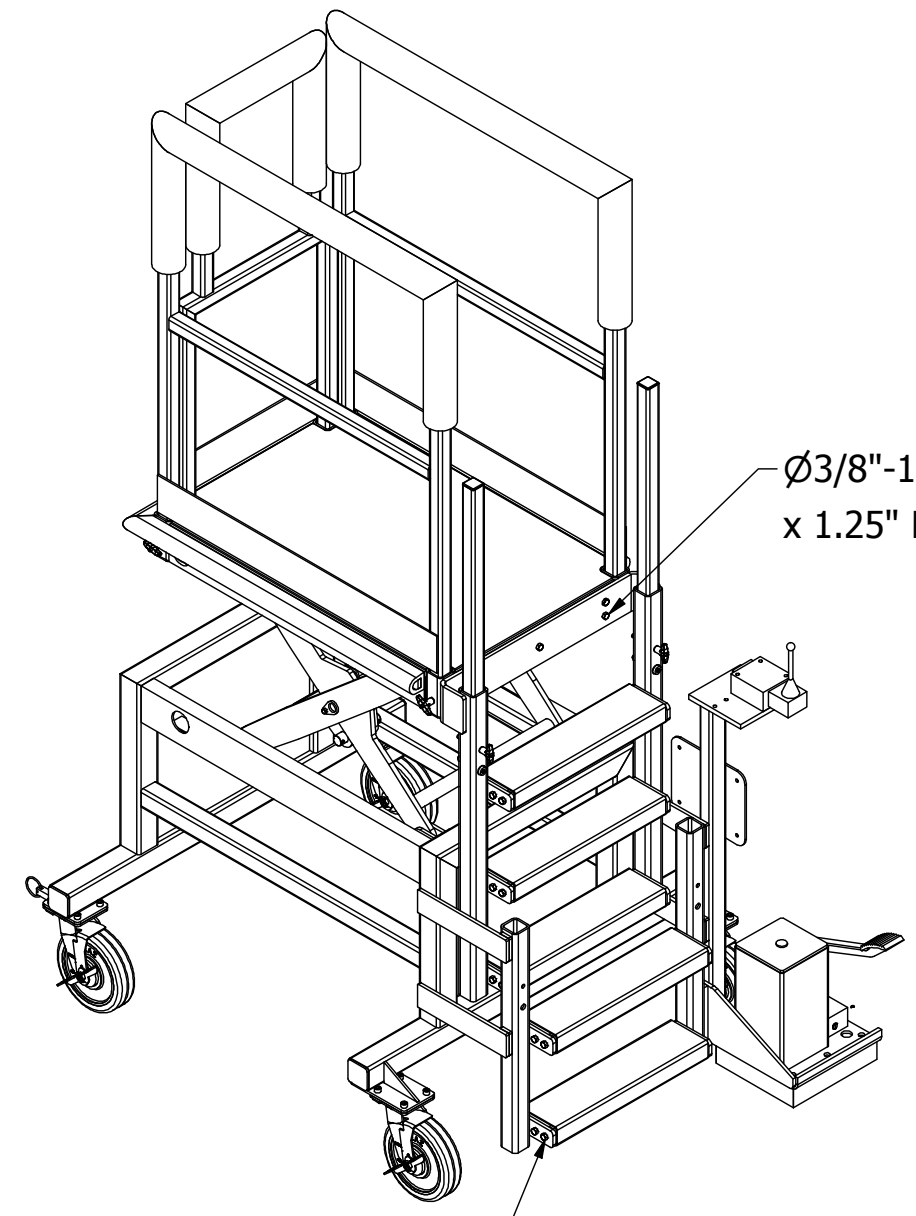
Part No. : DF071564-01	 LIFTSAFE ENGINEERING & SERVICE GROUP INC. www.liftsafeinspections.com T. (519) 896-2430/1-800-977-2005, Email: info@liftsafeinspections.com F. (519) 896-2085			
Materials:				
Weight: N/A	Customer & Location: AIRBUS HAMBURG	Project: A320 NEO SIDE SCROLL STAND		
Work Order No:	Checked By: R.B.	Date: 23/10/2019	Description: GENERAL ASSEMBLY	
	Designed By: D.M.	Date: 21/10/2019	SIZE: B	SCALE: 1/20
	Drawn By: D.M.	Date: 23/10/2019	SHEET 3 OF 4	DWG NO: V04200
				REV: 0



Ø1/4"-20 UNC SOCKET HD
x 2.75" LG. SST --> **4**/unit

Ø1/4"-20 UNC SOCKET HD
x 1.25" LG. SST --> **7**/unit

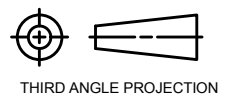
Ø3/8"-16 UNC HEX HD
x 0.75" LG. SST --> **3**/unit



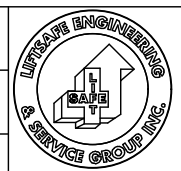
Ø3/8"-16 UNC HEX HD
x 1.25" LG. SST --> **5**/unit

Ø3/8"-16 UNC HEX HD
x 1.50" LG. SST --> **20**/unit

THIS DRAWING AND THE INTELLECTUAL INFORMATION ON THIS DRAWING ARE THE PROPERTY OF LIFTSAFE ENGINEERING & SERVICE GROUP INC. AND MAY NOT BE REPRODUCED OR USED IN ANY MANNER WITHOUT OUR WRITTEN CONSENT



Tolerance Unless Noted Otherwise					
ANGLE	FRACTION	DECIMAL PLACES	INCHES	MILLIMETRES	
±12°	±1/16	.XXX	±.005	±0.1	
		.XX	±.010	±0.3	
		.X	±.020	±0.5	

Part No. : DF071564-01	 LIFTSAFE ENGINEERING & SERVICE GROUP INC. www.liftsafeinspections.com T. (519) 896-2430/1-800-977-2005, Email: info@liftsafeinspections.com F. (519) 896-2085			
Materials:				
Weight: N/A	Customer & Location: AIRBUS HAMBURG		Project: A320 NEO SIDE SCROLL STAND	
Work Order No:				
Checked By: R.B	Date: 23/10/2019	Description: GENERAL ASSEMBLY		
Designed By: D.M.	Date: 21/10/2019	SIZE: B	SCALE: 1/17	DWG NO: V04200
Drawn By: D.M.	Date: 23/10/2019	SHEET 4 OF 4		REV: 0