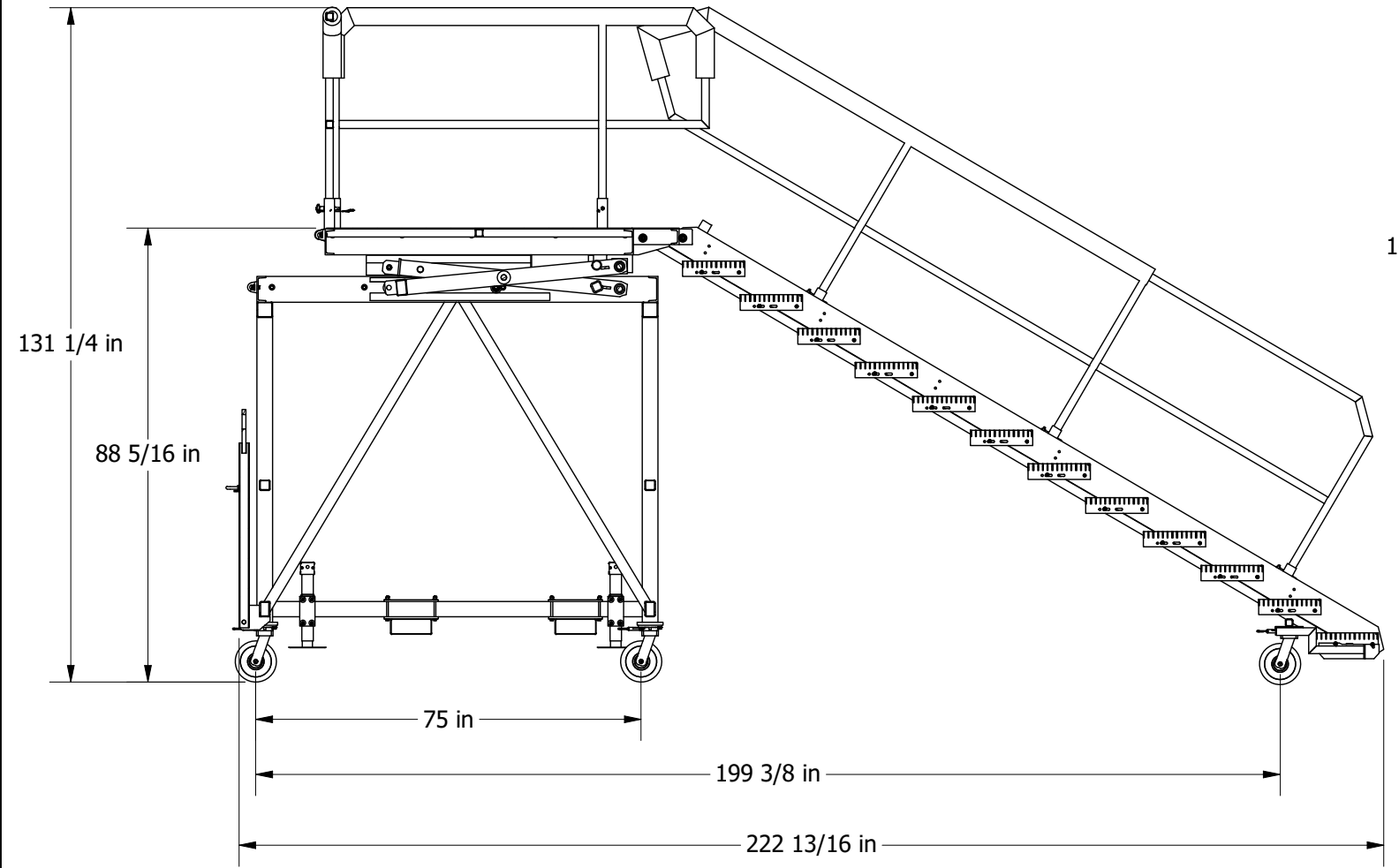
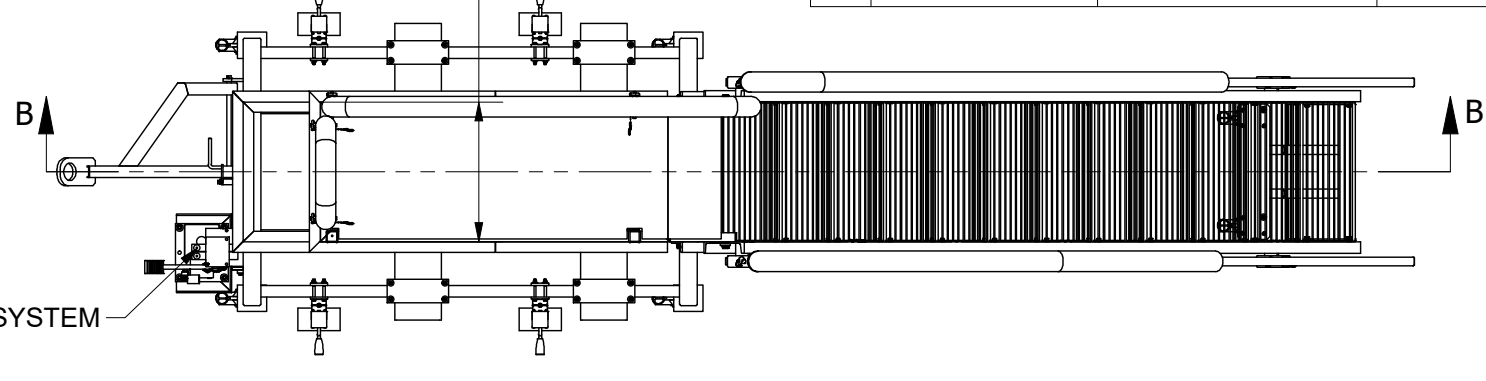
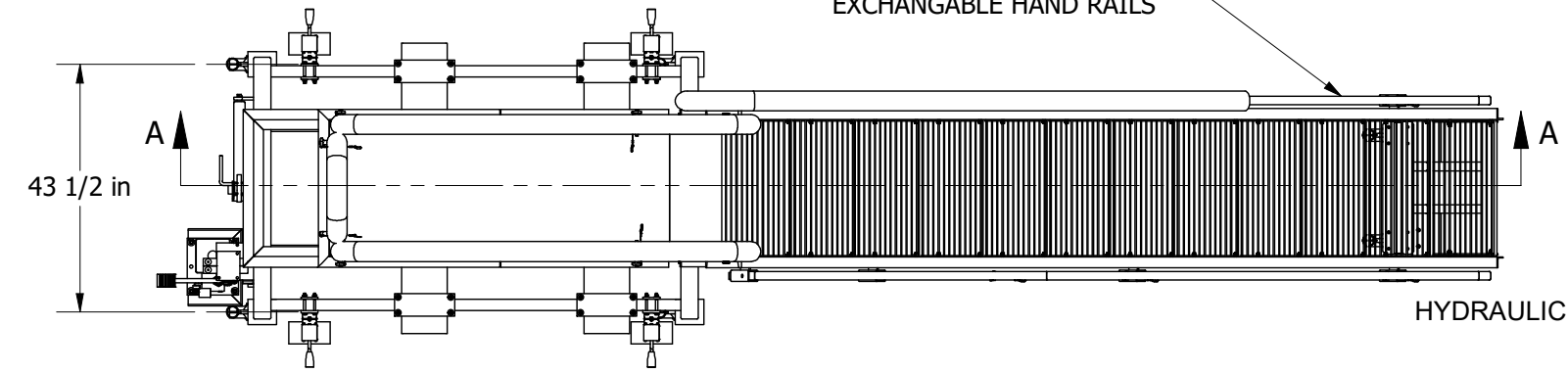


REVISION HISTORY			
REV	DESCRIPTION	DATE	APPROVED
1	NOTES UPDATED	2019-08-07	R.B.

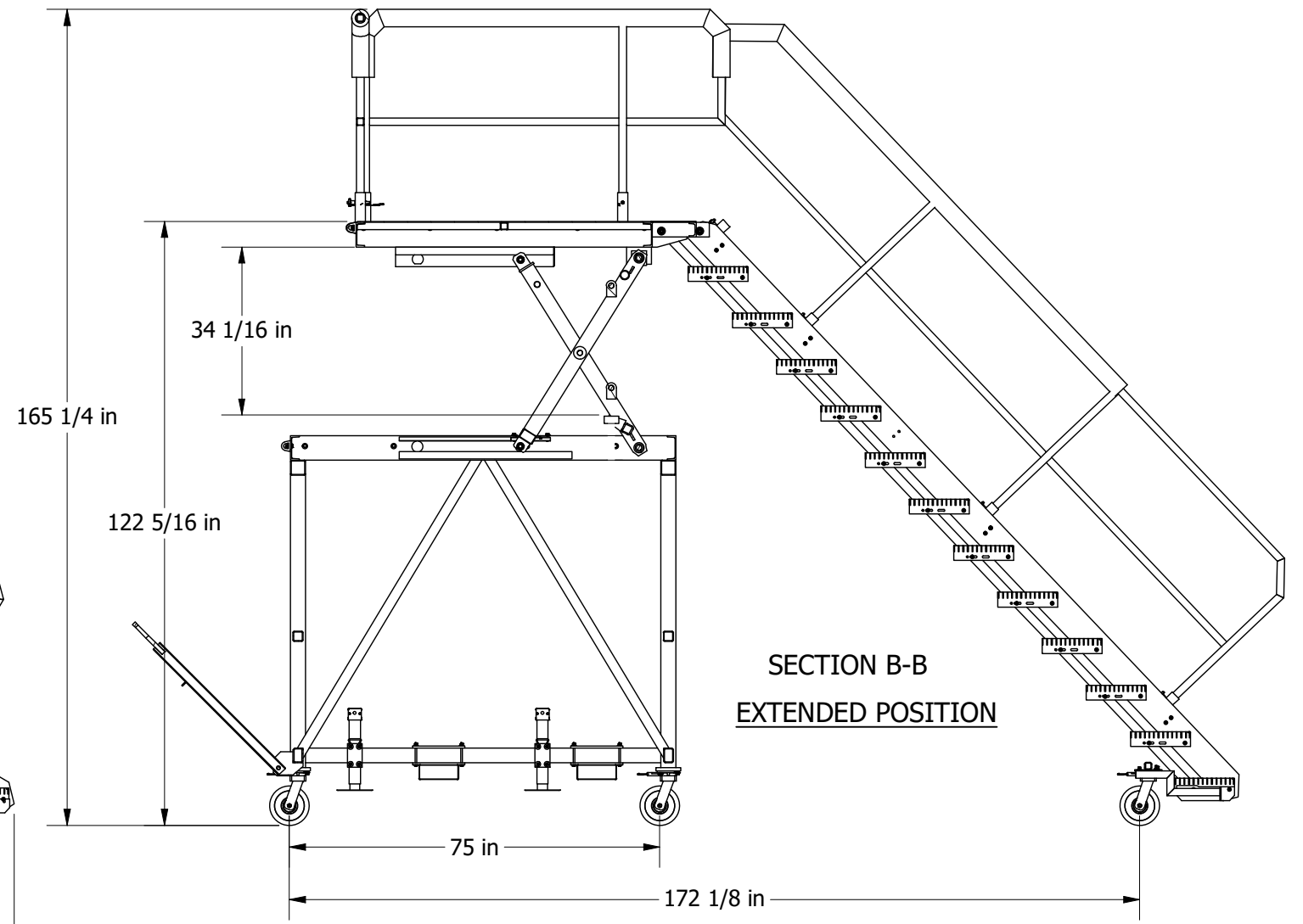
LH, RH STAND EXCHANGABLE HAND RAILS

24 in WORKING PLATFORM

HYDRAULIC SYSTEM



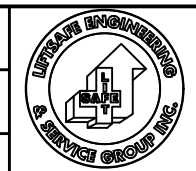
SECTION A-A
COLLAPSED POSITION



SECTION B-B
EXTENDED POSITION

TARE WEIGHT: 1500 LBS.
WLL: 330 LB
MAX. TOWING SPEED: 5 MPH
WORKING PLATFORM: 2 FT - (2) PERSONNEL TO STAND
WORKING PLATFORM RAISED BY MANUAL ACTUATION OF HYDRAULIC SYSTEM

Part No.
Materials.
Work Order No.
Next Assembly.



LIFTSAFE ENGINEERING & SERVICE GROUP INC.

www.liftsafeinspections.com T. (519) 896-2430/1-800-977-2005,
Email: info@liftsafeinspections.com F. (519) 896-2085

Customer & Location:
Project:

DF071562-01

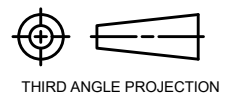
Checked By:
Designed By:
Drawn By: D.M.

Date:
Date:
Date: 11/26/2018

Description:
SIZE: B
SCALE: N.T.S.
SHEET 1 OF 1

DWG NO:
V03570
REV: 1

THIS DRAWING AND THE INTELLECTUAL INFORMATION ON THIS DRAWING ARE THE PROPERTY OF LIFTSAFE ENGINEERING & SERVICE GROUP INC. AND MAY NOT BE REPRODUCED OR USED IN ANY MANNER WITHOUT OUR WRITTEN CONSENT



THIRD ANGLE PROJECTION

Tolerance Unless Noted Otherwise				
ANGLE	FRACTION	DECIMAL PLACES	INCHES	MILLIMETRES
± 1/2°	± 1/16	.XXX	± .005	± 0.1
		.XX	± .010	± 0.3
		.X	± .020	± 0.5