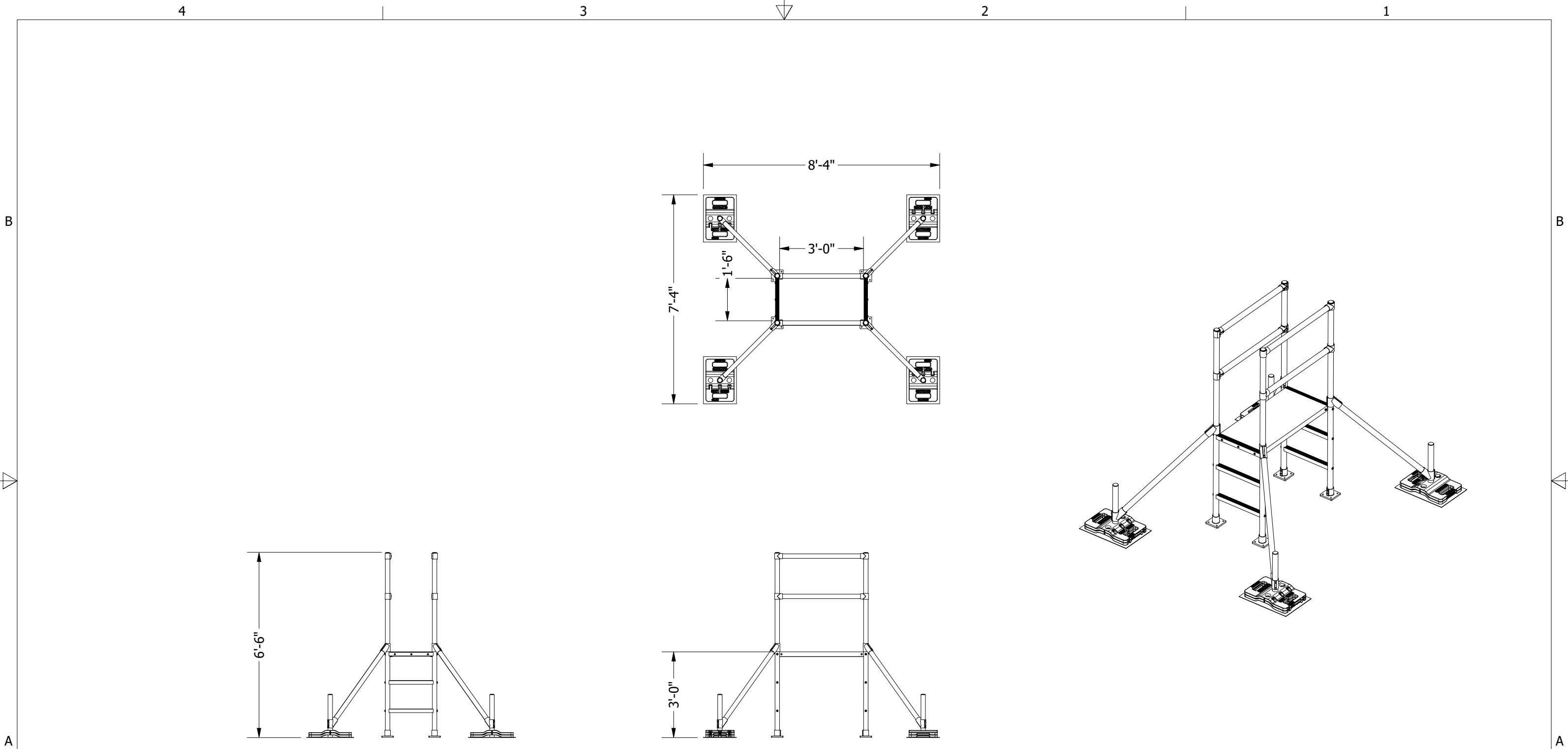
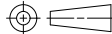


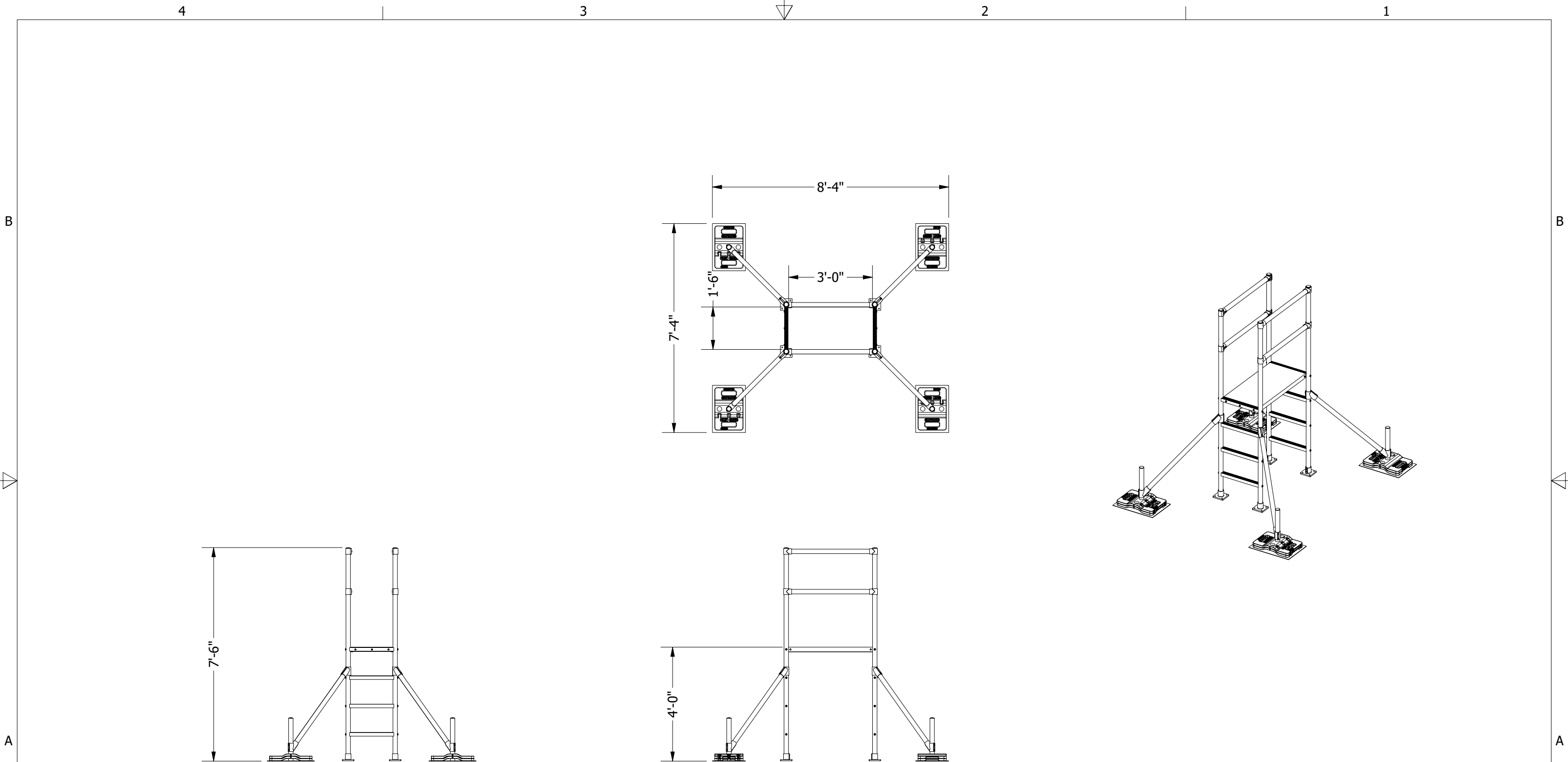
- NOTES:
- 1. FAILURE TO READ, UNDERSTAND, AND FOLLOW THE INSTALLATION MANUAL MAY RESULT IN INJURY OR DEATH
 - 2. GUARDRAIL CONFIGURATION MUST BE AS SHOWN TO COMPLY WITH LOADING REQUIREMENTS OF ONTARIO BUILDING CODE (2012) SECTION 4.1.5.14.1B AND 4.1.5.14.4
 - 3. NO MODIFICATIONS OR ALTERATIONS ARE PERMITTED TO THE LAYOUT WITHOUT MANUFACTURER'S WRITTEN APPROVAL.
 - 4. SET SCREWS IN ALL FITTINGS SHOULD BE TIGHTENED TO 18 FT-LBS. ONE SET-SCREW IN THE BOTTOM BASEPLATE IS REQUIRED TO BE SECURED AGAINST POST, SHOULD BE TIGHTENED TO 25 FT-LBS.
 - 5. MEASUREMENTS TO BE CONFIRMED ON SITE AND ANY DISCREPANCIES REPORTED TO LIFTSAFE FALL PROTECTION.

Designed by:	EBD	<div>ROOFGUARD</div> <div>ROOFGUARD GUARDRAIL SYSTEM</div> <div>www.fallsafetysolutions.com T. (519) 896-2430/1-800-977-2005 Email: info@liftsafegroup.com F. (519) 896-2085</div> <div>THIS DRAWING AND THE INTELLECTUAL INFORMATION ON THIS DRAWING ARE THE PROPERTY OF LIFTSAFE FALL PROTECTION INC. AND MAY NOT BE REPRODUCED OR USED IN ANY MANNER WITHOUT OUR WRITTEN CONSENT</div>					
Drafted by:	EBD						
Checked by:							
Date:							
Origin#		ALL MEASUREMENTS IN IMPERIAL UNITS - INCH/POUND/DEGREE					
General Tolerance Angular Fraction		Description: ROOFSTEP, 2 FT UP, 2 FT DOWN					
± 1/2"							
± 1/16							
.xxx ± 0.005							
.xx ± 0.010							
.x ± 0.020		Third Angle Projection	Weight: 547 lbmass	Sheet: 1 of 1	Scale: 1/40	DWG# ROOFSTEP 2-2 XS	REV A



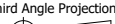
- NOTES:
1. FAILURE TO READ, UNDERSTAND, AND FOLLOW THE INSTALLATION MANUAL MAY RESULT IN INJURY OR DEATH
 2. GUARDRAIL CONFIGURATION MUST BE AS SHOWN TO COMPLY WITH LOADING REQUIREMENTS OF ONTARIO BUILDING CODE (2012) SECTION 4.1.5.14.1B AND 4.1.5.14.4
 3. NO MODIFICATIONS OR ALTERATIONS ARE PERMITTED TO THE LAYOUT WITHOUT MANUFACTURER'S WRITTEN APPROVAL.
 4. SET SCREWS IN ALL FITTINGS SHOULD BE TIGHTENED TO 18 FT-LBS. ONE SET-SCREW IN THE BOTTOM BASEPLATE IS REQUIRED TO BE SECURED AGAINST POST, SHOULD BE TIGHTENED TO 25 FT-LBS.
 5. MEASUREMENTS TO BE CONFIRMED ON SITE AND ANY DISCREPANCIES REPORTED TO LIFTSAFE FALL PROTECTION.

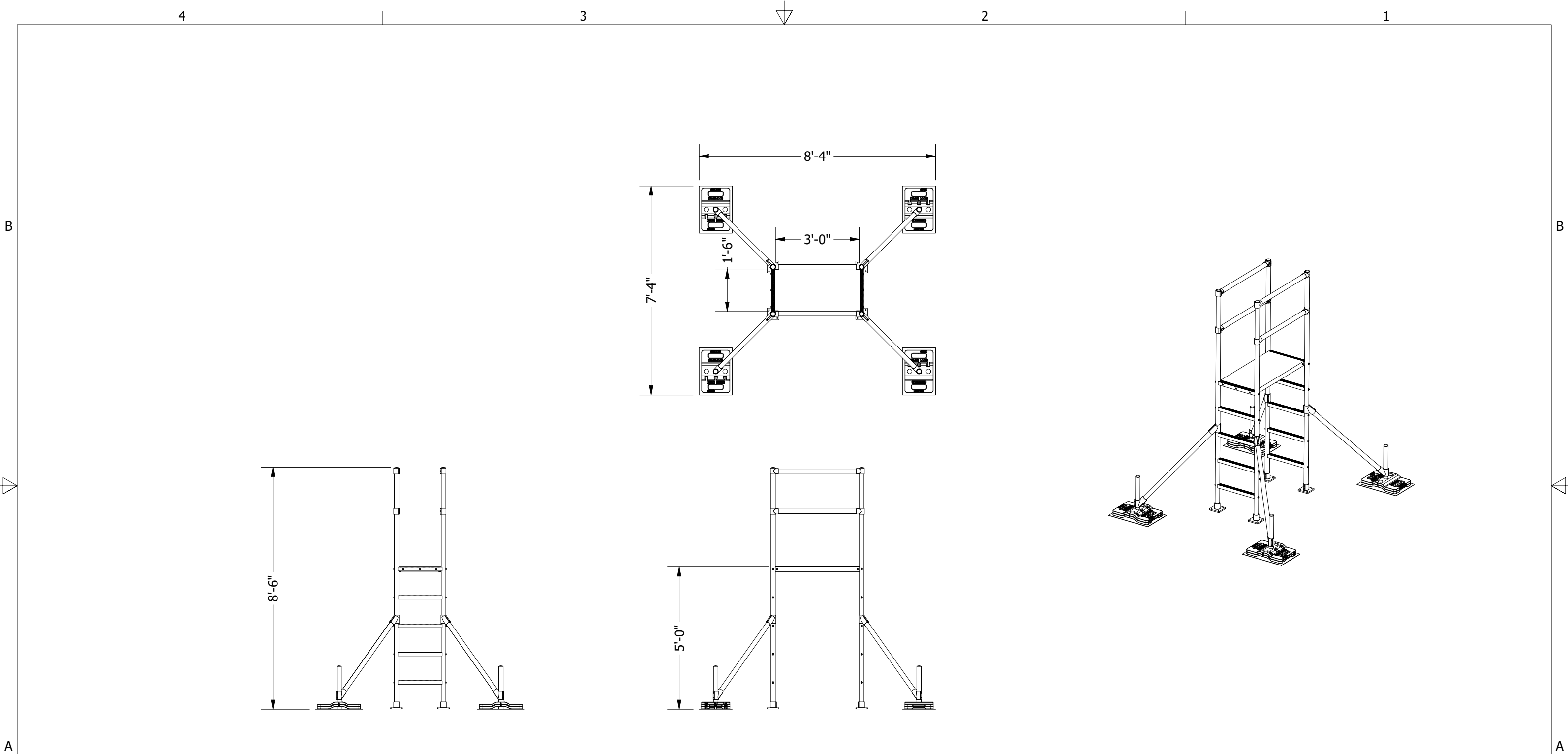
Designed by:	EBD	<div>ROOFGUARD</div> <div>ROOFGUARD GUARDRAIL SYSTEM</div> <div>www.fallsafetysolutions.com T. (519) 896-2430/1-800-977-2005 Email: info@liftsafegroup.com F. (519) 896-2085</div> <div>THIS DRAWING AND THE INTELLECTUAL INFORMATION ON THIS DRAWING ARE THE PROPERTY OF LIFTSAFE FALL PROTECTION INC. AND MAY NOT BE REPRODUCED OR USED IN ANY MANNER WITHOUT OUR WRITTEN CONSENT</div>					
Drafted by:	EBD						
Checked by:							
Date:							
Origin#		ALL MEASUREMENTS IN IMPERIAL UNITS - INCH/POUND/DEGREE					
General Tolerance Angular Fraction		<div>Description:</div> <div>ROOFSTEP, 3 FT UP, 3 FT DOWN</div>					
± 1/2"							
± 1/16							
.xxx ± 0.005							
.xx ± 0.010							
.x ± 0.020		Third Angle Projection	Weight:	Sheet:	Scale:	DWG#	REV
			582 lbmass	1 of 1	1/40	ROOFSTEP 3-3 XS	A



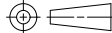
NOTES:

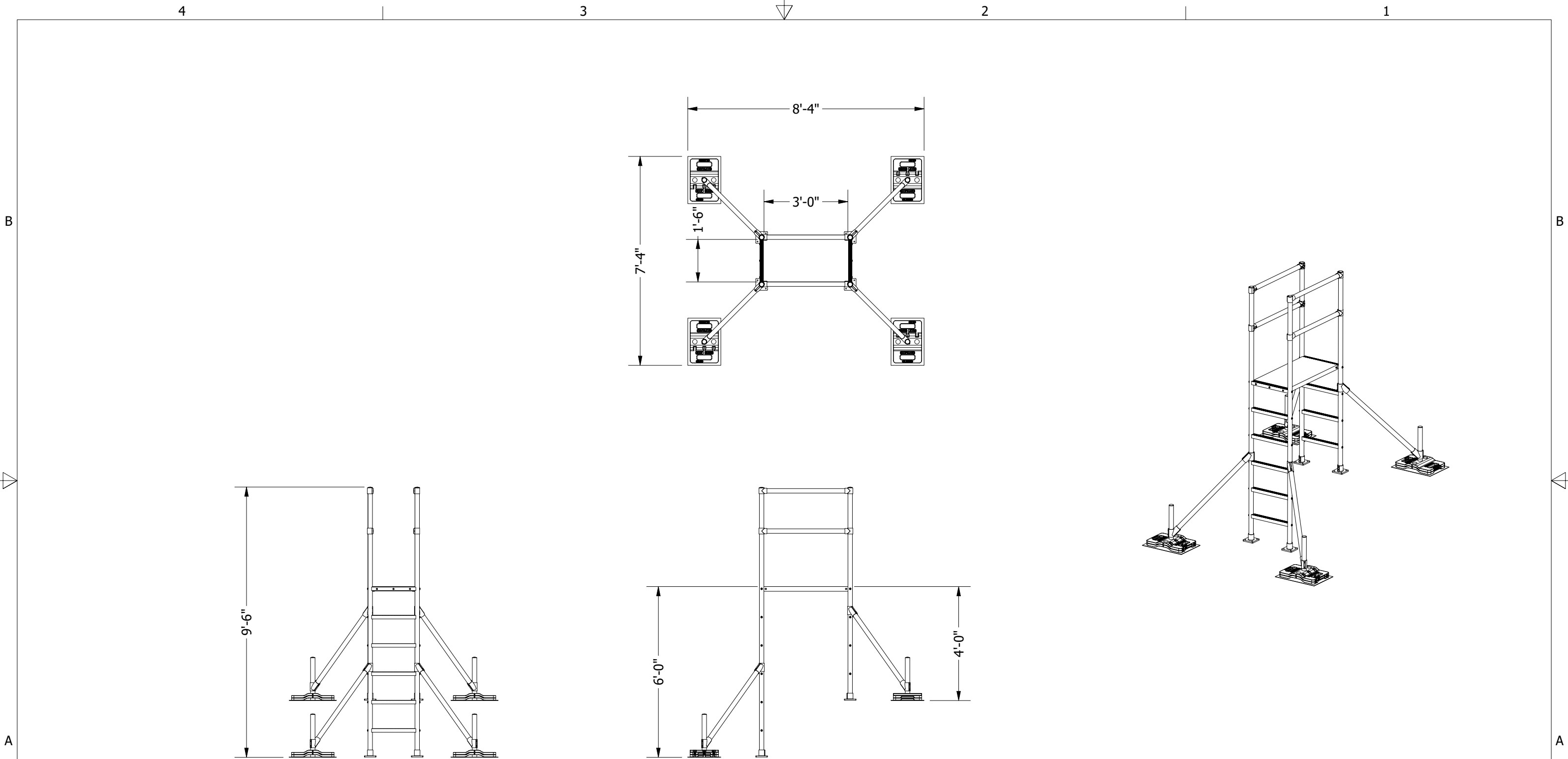
1. FAILURE TO READ, UNDERSTAND, AND FOLLOW THE INSTALLATION MANUAL MAY RESULT IN INJURY OR DEATH
2. GUARDRAIL CONFIGURATION MUST BE AS SHOWN TO COMPLY WITH LOADING REQUIREMENTS OF ONTARIO BUILDING CODE (2012) SECTION 4.1.5.14.1B AND 4.1.5.14.4
3. NO MODIFICATIONS OR ALTERATIONS ARE PERMITTED TO THE LAYOUT WITHOUT MANUFACTURER'S WRITTEN APPROVAL.
4. SET SCREWS IN ALL FITTINGS SHOULD BE TIGHTENED TO 18 FT-LBS. ONE SET-SCREW IN THE BOTTOM BASEPLATE IS REQUIRED TO BE SECURED AGAINST POST, SHOULD BE TIGHTENED TO 25 FT-LBS.
5. MEASUREMENTS TO BE CONFIRMED ON SITE AND ANY DISCREPANCIES REPORTED TO LIFTSAFE FALL PROTECTION.

Designed by:	EBD	<div>ROOFGUARD</div> <div>ROOFGUARD GUARDRAIL SYSTEM</div> <div>www.fallsafetysolutions.com T. (519) 896-2430/1-800-977-2005 Email: info@liftsafe.com F. (519) 896-2085</div> <div>THIS DRAWING AND THE INTELLECTUAL INFORMATION ON THIS DRAWING ARE THE PROPERTY OF LIFTSAFE FALL PROTECTION INC. AND MAY NOT BE REPRODUCED OR USED IN ANY MANNER WITHOUT OUR WRITTEN CONSENT</div>					
Drafted by:	EBD						
Checked by:							
Date:							
Origin#		ALL MEASUREMENTS IN IMPERIAL UNITS - INCH/POUND/DEGREE					
Description:		ROOFSTEP, 4 FT UP, 4 FT DOWN					
General Tolerance	± 1/2"		Weight:	Sheet:	Scale:	DWG#	REV
Angular	± 1/16		617 lbmass	1 of 1	1/40	ROOFSTEP 4-4 XS	A
Fraction	± 0.005						
.xxx	± 0.010						
.xx	± 0.020						
.x							

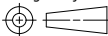


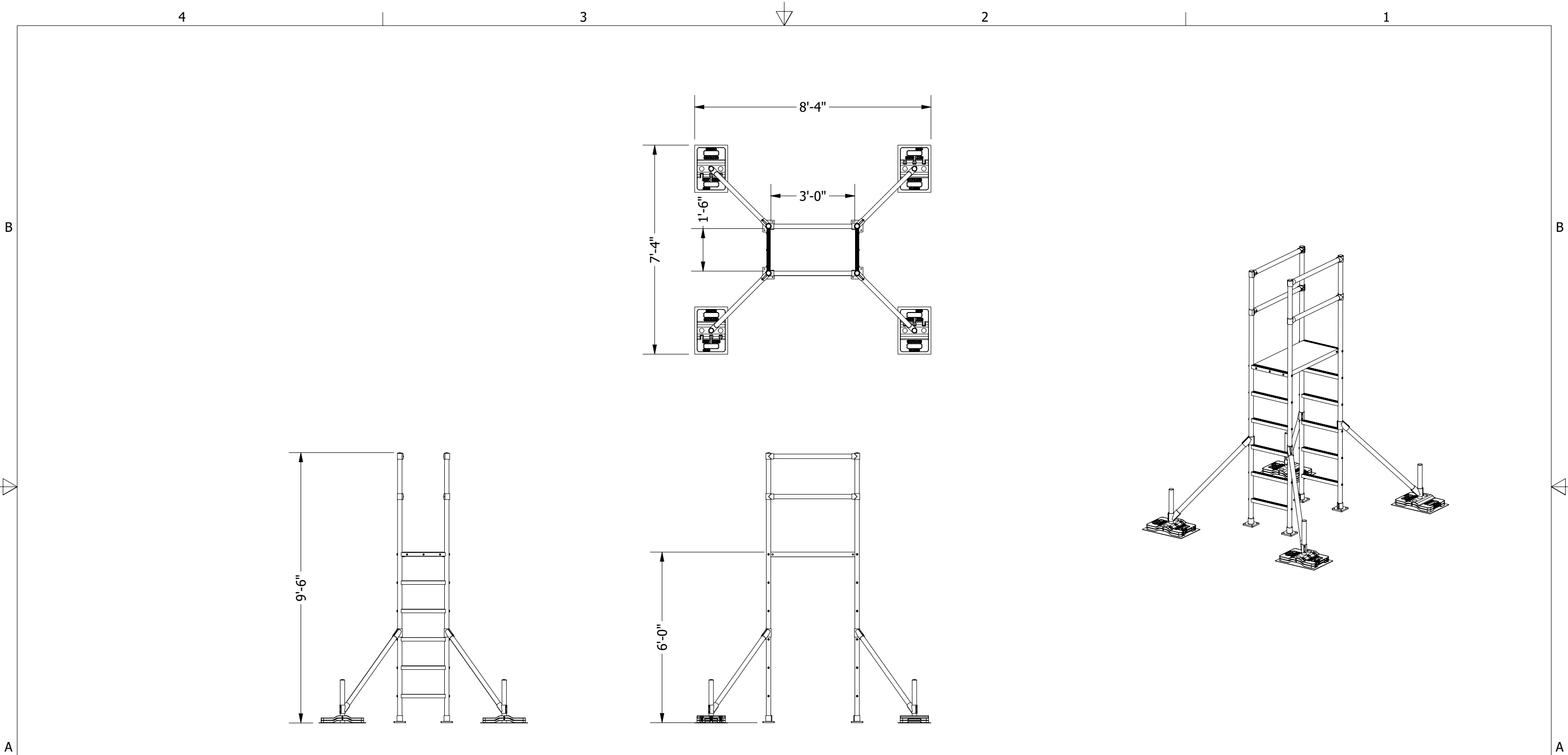
- NOTES:
- 1. FAILURE TO READ, UNDERSTAND, AND FOLLOW THE INSTALLATION MANUAL MAY RESULT IN INJURY OR DEATH
 - 2. GUARDRAIL CONFIGURATION MUST BE AS SHOWN TO COMPLY WITH LOADING REQUIREMENTS OF ONTARIO BUILDING CODE (2012) SECTION 4.1.5.14.1B AND 4.1.5.14.4
 - 3. NO MODIFICATIONS OR ALTERATIONS ARE PERMITTED TO THE LAYOUT WITHOUT MANUFACTURER'S WRITTEN APPROVAL.
 - 4. SET SCREWS IN ALL FITTINGS SHOULD BE TIGHTENED TO 18 FT-LBS. ONE SET-SCREW IN THE BOTTOM BASEPLATE IS REQUIRED TO BE SECURED AGAINST POST, SHOULD BE TIGHTENED TO 25 FT-LBS.
 - 5. MEASUREMENTS TO BE CONFIRMED ON SITE AND ANY DISCREPANCIES REPORTED TO LIFTSAFE FALL PROTECTION.

Designed by:	EBD	<div>ROOFGUARD</div> <div>ROOFGUARD GUARDRAIL SYSTEM</div> <div>www.fallsafetysolutions.com T. (519) 896-2430/1-800-977-2005 Email: info@liftsafegroup.com F. (519) 896-2085</div> <div>THIS DRAWING AND THE INTELLECTUAL INFORMATION ON THIS DRAWING ARE THE PROPERTY OF LIFTSAFE FALL PROTECTION INC. AND MAY NOT BE REPRODUCED OR USED IN ANY MANNER WITHOUT OUR WRITTEN CONSENT</div> <div>ALL MEASUREMENTS IN IMPERIAL UNITS - INCH/POUND/DEGREE</div> <div>Description: ROOFSTEP, 5 FT UP, 5 FT DOWN</div>					
Drafted by:	EBD						
Checked by:							
Date:							
Origin#							
General Tolerance	± 1/2"		Weight: 652 lbmass	Sheet: 1 of 1	Scale: 1/40	DWG# ROOFSTEP 5-5 XS	REV A
Angular	± 1/2°						
Fraction	± 1/16						
.xxx	± 0.005						
.xx	± 0.010						
.x	± 0.020						

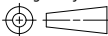


- NOTES:
1. FAILURE TO READ, UNDERSTAND, AND FOLLOW THE INSTALLATION MANUAL MAY RESULT IN INJURY OR DEATH
 2. GUARDRAIL CONFIGURATION MUST BE AS SHOWN TO COMPLY WITH LOADING REQUIREMENTS OF ONTARIO BUILDING CODE (2012) SECTION 4.1.5.14.1B AND 4.1.5.14.4
 3. NO MODIFICATIONS OR ALTERATIONS ARE PERMITTED TO THE LAYOUT WITHOUT MANUFACTURER'S WRITTEN APPROVAL.
 4. SET SCREWS IN ALL FITTINGS SHOULD BE TIGHTENED TO 18 FT-LBS. ONE SET-SCREW IN THE BOTTOM BASEPLATE IS REQUIRED TO BE SECURED AGAINST POST, SHOULD BE TIGHTENED TO 25 FT-LBS.
 5. MEASUREMENTS TO BE CONFIRMED ON SITE AND ANY DISCREPANCIES REPORTED TO LIFTSAFE FALL PROTECTION.

Designed by:	EBD	<div>ROOFGUARD</div> <div>ROOFGUARD GUARDRAIL SYSTEM</div> <div>www.fallsafetysolutions.com T. (519) 896-2430/1-800-977-2005 Email: info@liftsafegroup.com F. (519) 896-2085</div> <div>THIS DRAWING AND THE INTELLECTUAL INFORMATION ON THIS DRAWING ARE THE PROPERTY OF LIFTSAFE FALL PROTECTION INC. AND MAY NOT BE REPRODUCED OR USED IN ANY MANNER WITHOUT OUR WRITTEN CONSENT</div>					
Drafted by:	EBD						
Checked by:							
Date:							
Origin#		ALL MEASUREMENTS IN IMPERIAL UNITS - INCH/POUND/DEGREE					
Description:		ROOFSTEP, 6 FT UP, 4 FT DOWN					
General Tolerance	± 1/2"	<div>Third Angle Projection</div> 	Weight:	Sheet:	Scale:	DWG#	REV
Angular	± 1/16		653 lbmass	1 of 1	1/40	ROOFSTEP 6-4 XS	A
Fraction	± 0.005						
.xxx	± 0.010						
.xx	± 0.020						
.x							



- NOTES:
- 1. FAILURE TO READ, UNDERSTAND, AND FOLLOW THE INSTALLATION MANUAL MAY RESULT IN INJURY OR DEATH
 - 2. GUARDRAIL CONFIGURATION MUST BE AS SHOWN TO COMPLY WITH LOADING REQUIREMENTS OF ONTARIO BUILDING CODE (2012) SECTION 4.1.5.14.1B AND 4.1.5.14.4
 - 3. NO MODIFICATIONS OR ALTERATIONS ARE PERMITTED TO THE LAYOUT WITHOUT MANUFACTURER'S WRITTEN APPROVAL.
 - 4. SET SCREWS IN ALL FITTINGS SHOULD BE TIGHTENED TO 18 FT-LBS. ONE SET-SCREW IN THE BOTTOM BASEPLATE IS REQUIRED TO BE SECURED AGAINST POST, SHOULD BE TIGHTENED TO 25 FT-LBS.
 - 5. MEASUREMENTS TO BE CONFIRMED ON SITE AND ANY DISCREPANCIES REPORTED TO LIFTSAFE FALL PROTECTION.

Designed by:	EBD	<div>ROOFGUARD</div> <div>ROOFGUARD GUARDRAIL SYSTEM</div> <div>www.fallsafetysolutions.com T. (519) 896-2430/1-800-977-2005 Email: info@liftsafegroup.com F. (519) 896-2085</div> <div>THIS DRAWING AND THE INTELLECTUAL INFORMATION ON THIS DRAWING ARE THE PROPERTY OF LIFTSAFE FALL PROTECTION INC. AND MAY NOT BE REPRODUCED OR USED IN ANY MANNER WITHOUT OUR WRITTEN CONSENT</div>					
Drafted by:	EBD						
Checked by:							
Date:							
Origin#		ALL MEASUREMENTS IN IMPERIAL UNITS - INCH/POUND/DEGREE					
Description:		ROOFSTEP, 6 FT UP, 6 FT DOWN					
General Tolerance	± 1/2"	<div>Third Angle Projection</div> 	Weight:	Sheet:	Scale:	DWG#	REV
Angular	± 1/16		688 lbmass	1 of 1	1/40	ROOFSTEP 6-6 XS	A
Fraction	± 0.005						
.xxx	± 0.010						
.xx	± 0.020						
.x							