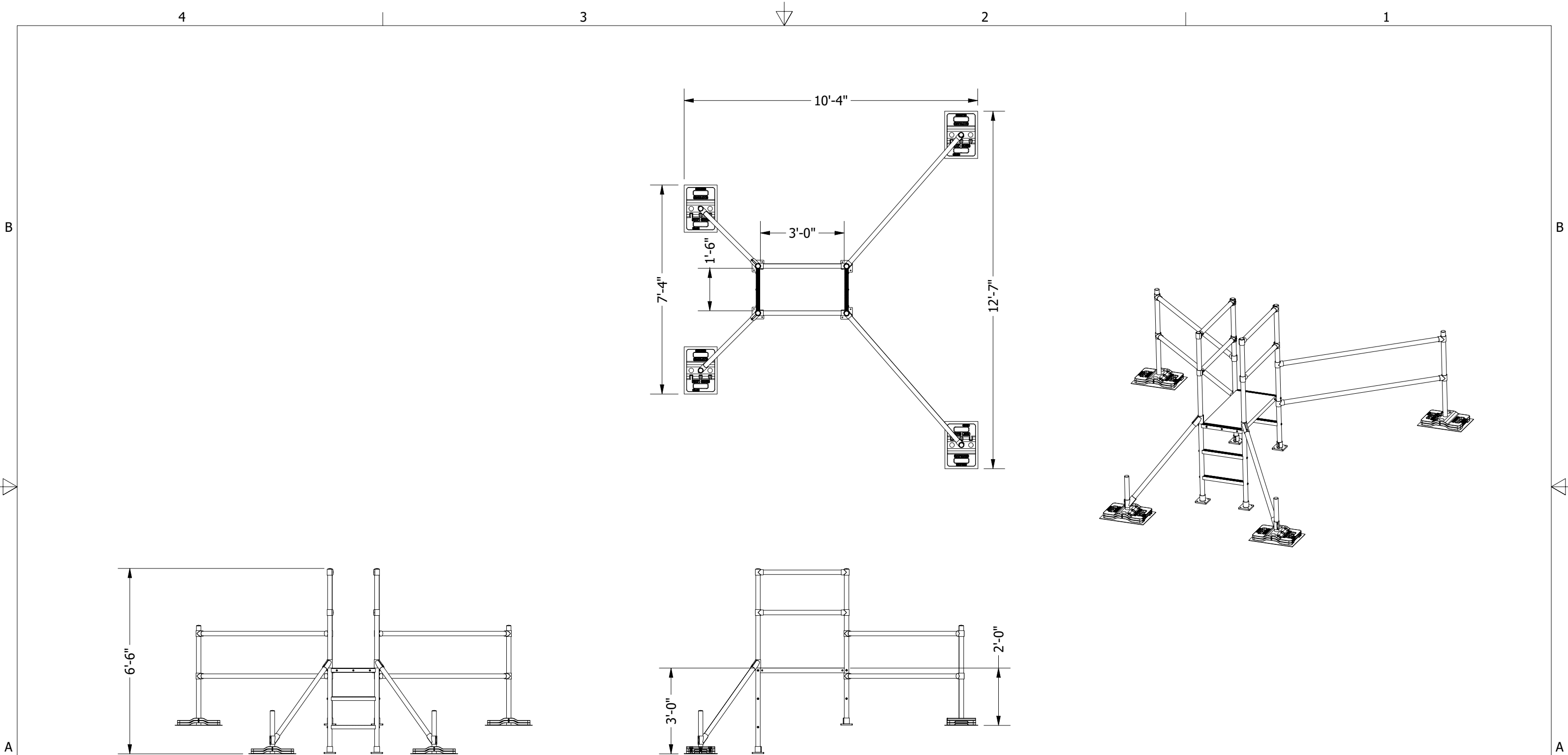



NOTES:

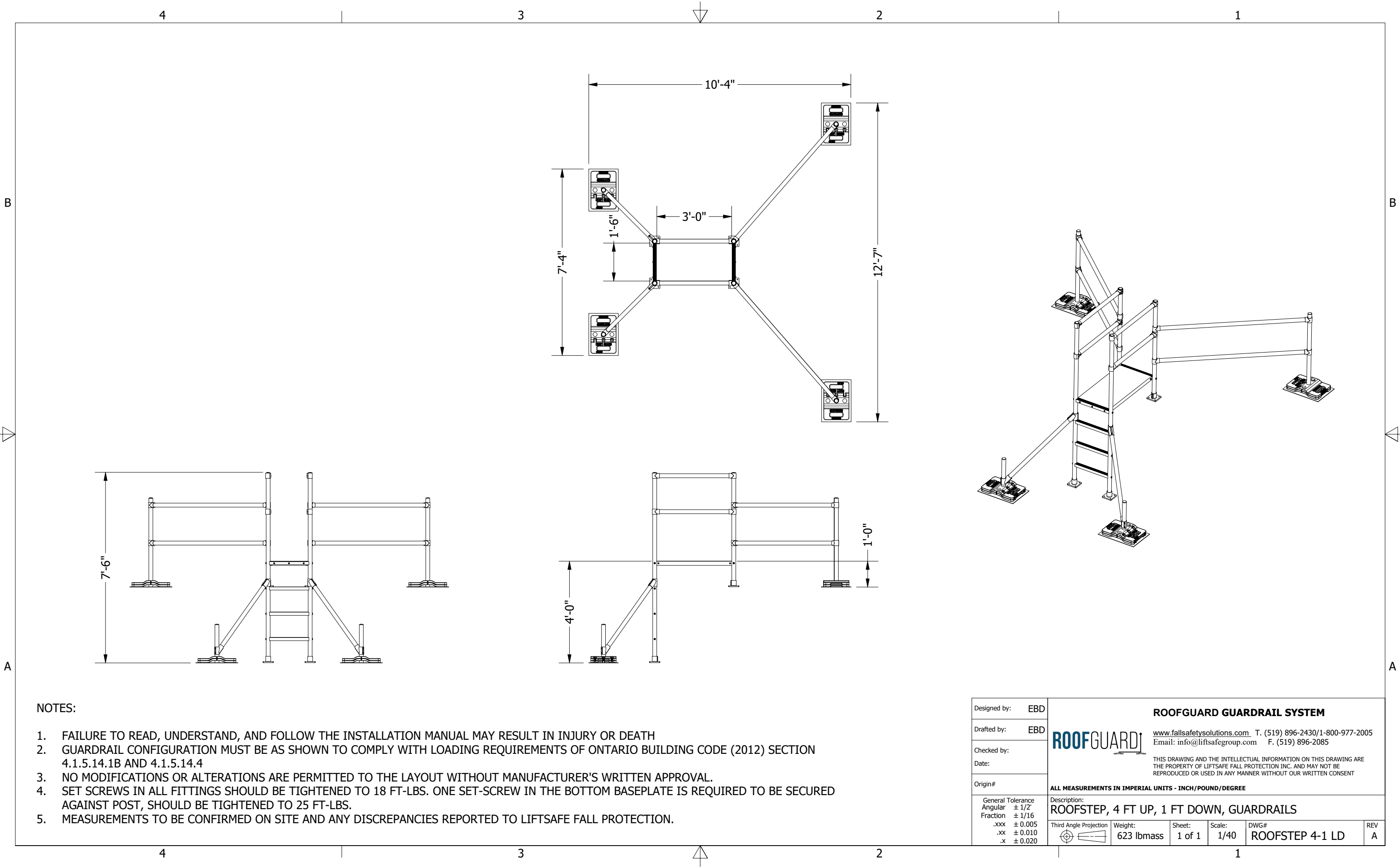
- 1. FAILURE TO READ, UNDERSTAND, AND FOLLOW THE INSTALLATION MANUAL MAY RESULT IN INJURY OR DEATH
- 2. GUARDRAIL CONFIGURATION MUST BE AS SHOWN TO COMPLY WITH LOADING REQUIREMENTS OF ONTARIO BUILDING CODE (2012) SECTION 4.1.5.14.1B AND 4.1.5.14.4
- 3. NO MODIFICATIONS OR ALTERATIONS ARE PERMITTED TO THE LAYOUT WITHOUT MANUFACTURER'S WRITTEN APPROVAL.
- 4. SET SCREWS IN ALL FITTINGS SHOULD BE TIGHTENED TO 18 FT-LBS. ONE SET-SCREW IN THE BOTTOM BASEPLATE IS REQUIRED TO BE SECURED AGAINST POST, SHOULD BE TIGHTENED TO 25 FT-LBS.
- 5. MEASUREMENTS TO BE CONFIRMED ON SITE AND ANY DISCREPANCIES REPORTED TO LIFTSAFE FALL PROTECTION.

Designed by:	EBD	ROOFGUARD GUARDRAIL SYSTEM					
Drafted by:	EBD	ROOFGUARD www.fallsafetysolutions.com T. (519) 896-2430/1-800-977-2005 Email: info@liftsafegroup.com F. (519) 896-2085					
Checked by:		THIS DRAWING AND THE INTELLECTUAL INFORMATION ON THIS DRAWING ARE THE PROPERTY OF LIFTSAFE FALL PROTECTION INC. AND MAY NOT BE REPRODUCED OR USED IN ANY MANNER WITHOUT OUR WRITTEN CONSENT					
Date:		ALL MEASUREMENTS IN IMPERIAL UNITS - INCH/POUND/DEGREE					
Origin#		Description: ROOFSTEP, 3 FT UP, 1 FT DOWN, GUARDRAILS					
General Tolerance	± 1/2"	Third Angle Projection	Weight:	Sheet:	Scale:	DWG#	REV
Angular	± 1/16		606 lbmass	1 of 1	1/40	ROOFSTEP 3-1 LD	A
Fraction	± 0.005						
.xxx	± 0.010						
.xx	± 0.020						
.x							



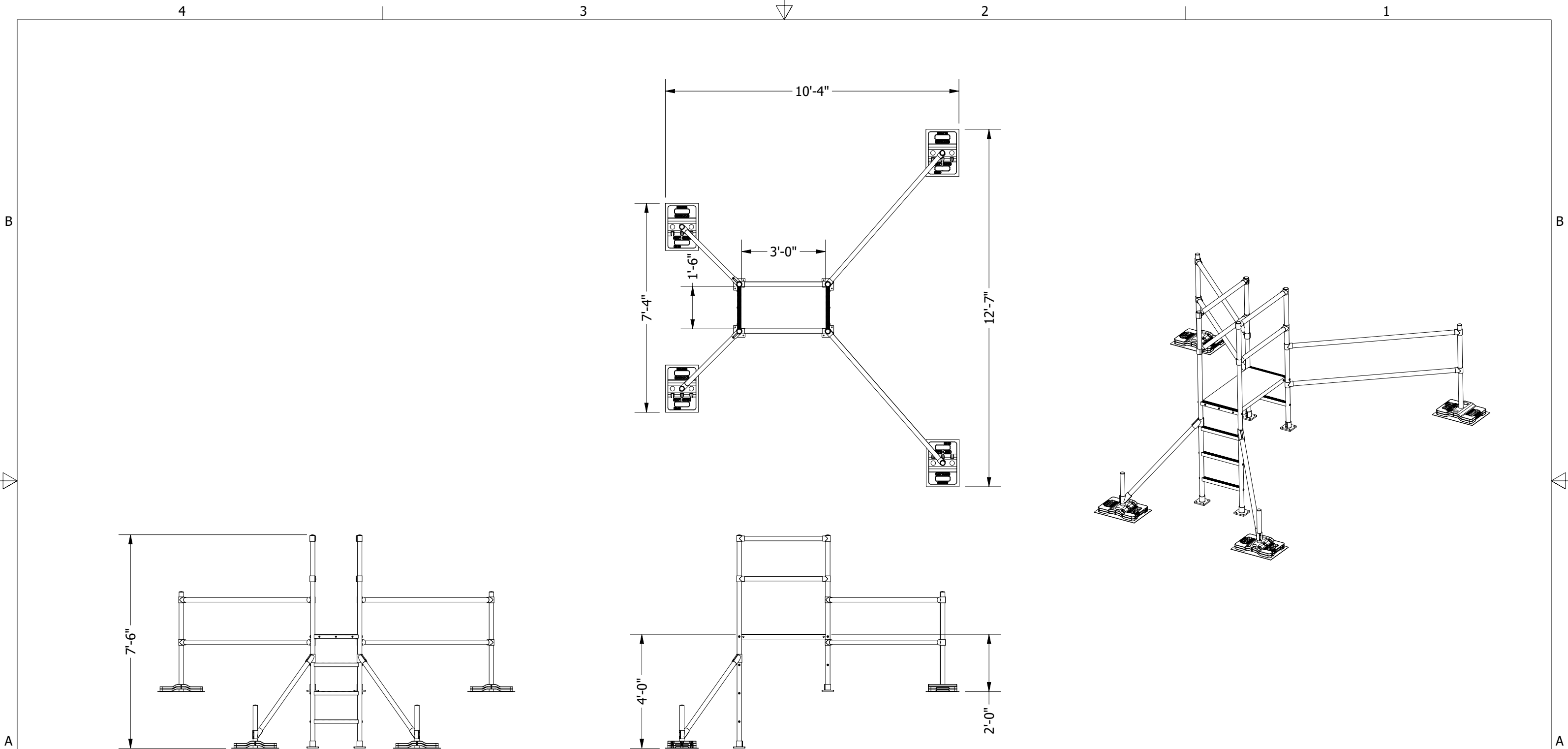
- NOTES:
1. FAILURE TO READ, UNDERSTAND, AND FOLLOW THE INSTALLATION MANUAL MAY RESULT IN INJURY OR DEATH
 2. GUARDRAIL CONFIGURATION MUST BE AS SHOWN TO COMPLY WITH LOADING REQUIREMENTS OF ONTARIO BUILDING CODE (2012) SECTION 4.1.5.14.1B AND 4.1.5.14.4
 3. NO MODIFICATIONS OR ALTERATIONS ARE PERMITTED TO THE LAYOUT WITHOUT MANUFACTURER'S WRITTEN APPROVAL.
 4. SET SCREWS IN ALL FITTINGS SHOULD BE TIGHTENED TO 18 FT-LBS. ONE SET-SCREW IN THE BOTTOM BASEPLATE IS REQUIRED TO BE SECURED AGAINST POST, SHOULD BE TIGHTENED TO 25 FT-LBS.
 5. MEASUREMENTS TO BE CONFIRMED ON SITE AND ANY DISCREPANCIES REPORTED TO LIFTSAFE FALL PROTECTION.

Designed by:	EBD	<div>ROOFGUARD</div> <div>ROOFGUARD GUARDRAIL SYSTEM</div> <div>www.fallsafetysolutions.com T. (519) 896-2430/1-800-977-2005 Email: info@liftsafegroup.com F. (519) 896-2085</div> <div>THIS DRAWING AND THE INTELLECTUAL INFORMATION ON THIS DRAWING ARE THE PROPERTY OF LIFTSAFE FALL PROTECTION INC. AND MAY NOT BE REPRODUCED OR USED IN ANY MANNER WITHOUT OUR WRITTEN CONSENT</div> <div>ALL MEASUREMENTS IN IMPERIAL UNITS - INCH/POUND/DEGREE</div>					
Drafted by:	EBD						
Checked by:							
Date:							
Origin#							
Description:		ROOFSTEP, 3 FT UP, 2 FT DOWN, GUARDRAILS					
General Tolerance	± 1/2"	<div>Third Angle Projection</div> 	Weight: 623 lbmass	Sheet: 1 of 1	Scale: 1/40	DWG# ROOFSTEP 3-2 LD	REV A
Angular	± 1/2°						
Fraction	± 1/16						
.xxx	± 0.005						
.xx	± 0.010						
.x	± 0.020						


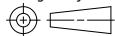


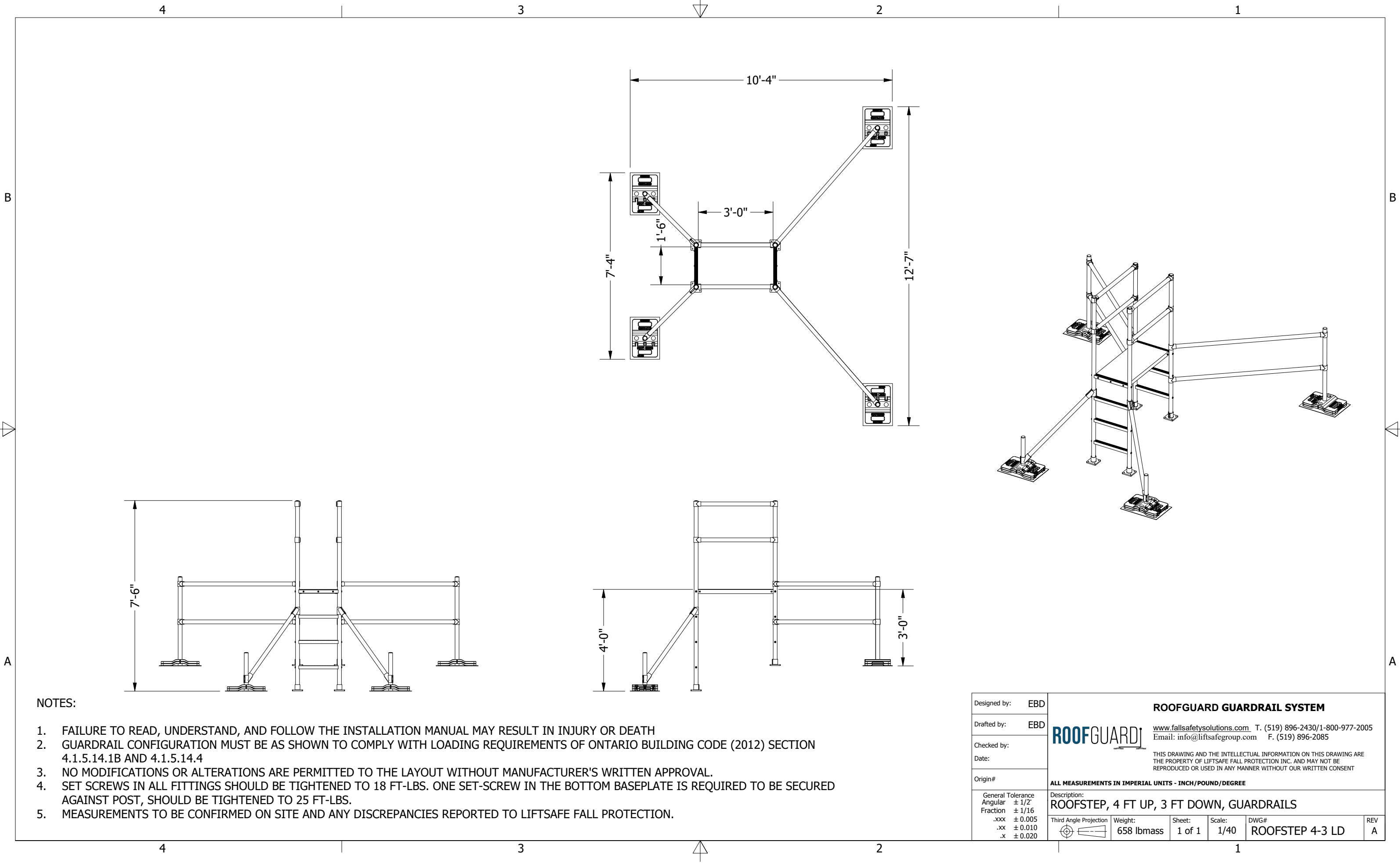
NOTES:

1. FAILURE TO READ, UNDERSTAND, AND FOLLOW THE INSTALLATION MANUAL MAY RESULT IN INJURY OR DEATH
2. GUARDRAIL CONFIGURATION MUST BE AS SHOWN TO COMPLY WITH LOADING REQUIREMENTS OF ONTARIO BUILDING CODE (2012) SECTION 4.1.5.14.1B AND 4.1.5.14.4
3. NO MODIFICATIONS OR ALTERATIONS ARE PERMITTED TO THE LAYOUT WITHOUT MANUFACTURER'S WRITTEN APPROVAL.
4. SET SCREWS IN ALL FITTINGS SHOULD BE TIGHTENED TO 18 FT-LBS. ONE SET-SCREW IN THE BOTTOM BASEPLATE IS REQUIRED TO BE SECURED AGAINST POST, SHOULD BE TIGHTENED TO 25 FT-LBS.
5. MEASUREMENTS TO BE CONFIRMED ON SITE AND ANY DISCREPANCIES REPORTED TO LIFTSafe FALL PROTECTION.



- NOTES:
1. FAILURE TO READ, UNDERSTAND, AND FOLLOW THE INSTALLATION MANUAL MAY RESULT IN INJURY OR DEATH
 2. GUARDRAIL CONFIGURATION MUST BE AS SHOWN TO COMPLY WITH LOADING REQUIREMENTS OF ONTARIO BUILDING CODE (2012) SECTION 4.1.5.14.1B AND 4.1.5.14.4
 3. NO MODIFICATIONS OR ALTERATIONS ARE PERMITTED TO THE LAYOUT WITHOUT MANUFACTURER'S WRITTEN APPROVAL.
 4. SET SCREWS IN ALL FITTINGS SHOULD BE TIGHTENED TO 18 FT-LBS. ONE SET-SCREW IN THE BOTTOM BASEPLATE IS REQUIRED TO BE SECURED AGAINST POST, SHOULD BE TIGHTENED TO 25 FT-LBS.
 5. MEASUREMENTS TO BE CONFIRMED ON SITE AND ANY DISCREPANCIES REPORTED TO LIFTSAFE FALL PROTECTION.

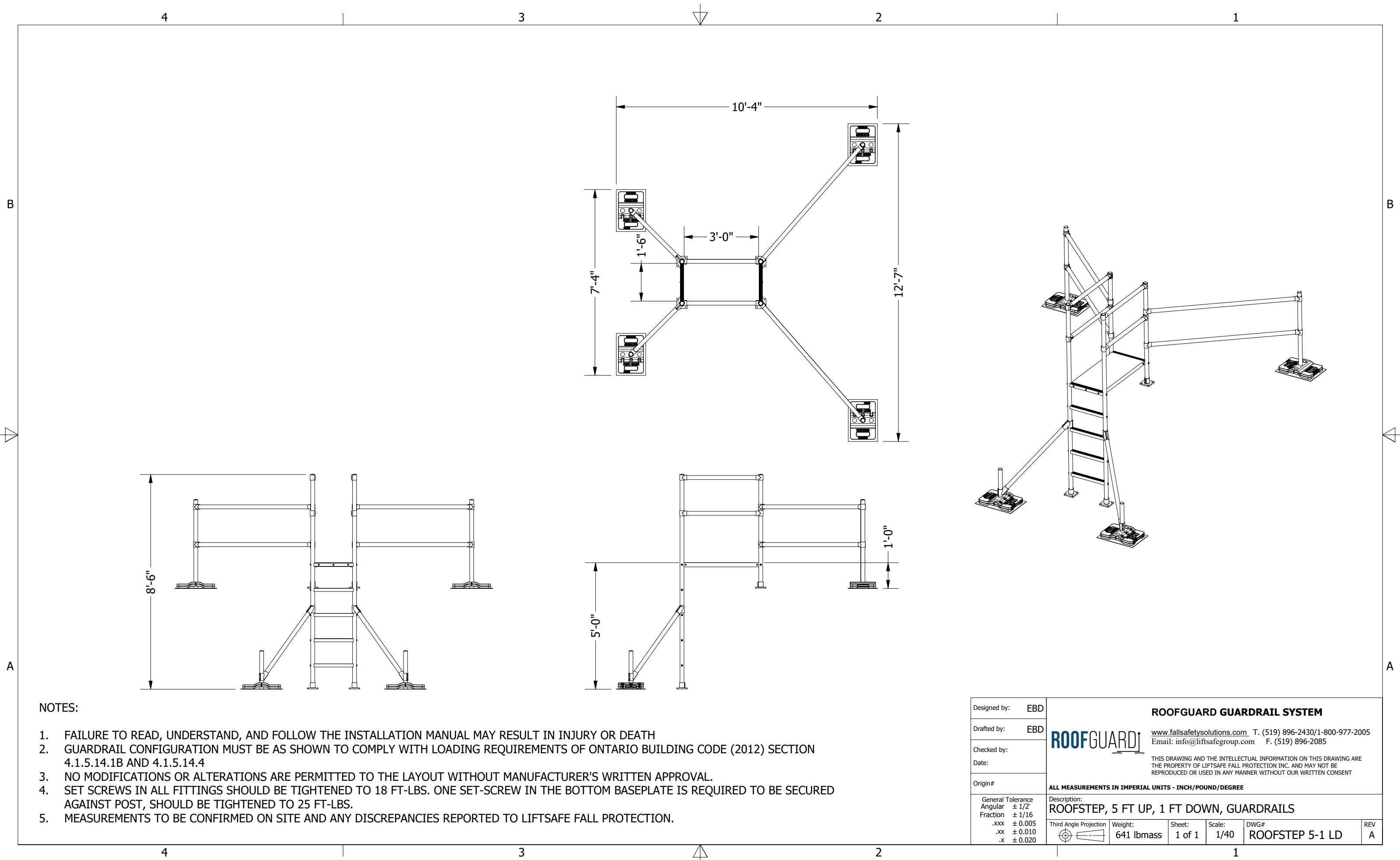
Designed by:	EBD	<div>ROOFGUARD GUARDRAIL SYSTEM</div> <div><div><div>ROOFGUARD</div></div><div><div>www.fallsafetysolutions.com</div><div>T. (519) 896-2430/1-800-977-2005</div><div>Email: info@liftsafegroup.com</div><div>F. (519) 896-2085</div></div></div> <div>THIS DRAWING AND THE INTELLECTUAL INFORMATION ON THIS DRAWING ARE THE PROPERTY OF LIFTSAFE FALL PROTECTION INC. AND MAY NOT BE REPRODUCED OR USED IN ANY MANNER WITHOUT OUR WRITTEN CONSENT</div>					
Drafted by:	EBD						
Checked by:							
Date:							
Origin#							
ALL MEASUREMENTS IN IMPERIAL UNITS - INCH/POUND/DEGREE							
Description:		ROOFSTEP, 4 FT UP, 2 FT DOWN, GUARDRAILS					
General Tolerance	± 1/2"		Weight: 641 lbmass	Sheet: 1 of 1	Scale: 1/40	DWG# ROOFSTEP 4-2 LD	REV A
Angular	± 1/2°						
Fraction	± 1/16						
.xxx	± 0.005						
.xx	± 0.010						
.x	± 0.020						



NOTES:

- 1. FAILURE TO READ, UNDERSTAND, AND FOLLOW THE INSTALLATION MANUAL MAY RESULT IN INJURY OR DEATH
- 2. GUARDRAIL CONFIGURATION MUST BE AS SHOWN TO COMPLY WITH LOADING REQUIREMENTS OF ONTARIO BUILDING CODE (2012) SECTION 4.1.5.14.1B AND 4.1.5.14.4
- 3. NO MODIFICATIONS OR ALTERATIONS ARE PERMITTED TO THE LAYOUT WITHOUT MANUFACTURER'S WRITTEN APPROVAL.
- 4. SET SCREWS IN ALL FITTINGS SHOULD BE TIGHTENED TO 18 FT-LBS. ONE SET-SCREW IN THE BOTTOM BASEPLATE IS REQUIRED TO BE SECURED AGAINST POST, SHOULD BE TIGHTENED TO 25 FT-LBS.
- 5. MEASUREMENTS TO BE CONFIRMED ON SITE AND ANY DISCREPANCIES REPORTED TO LIFTSAFE FALL PROTECTION.

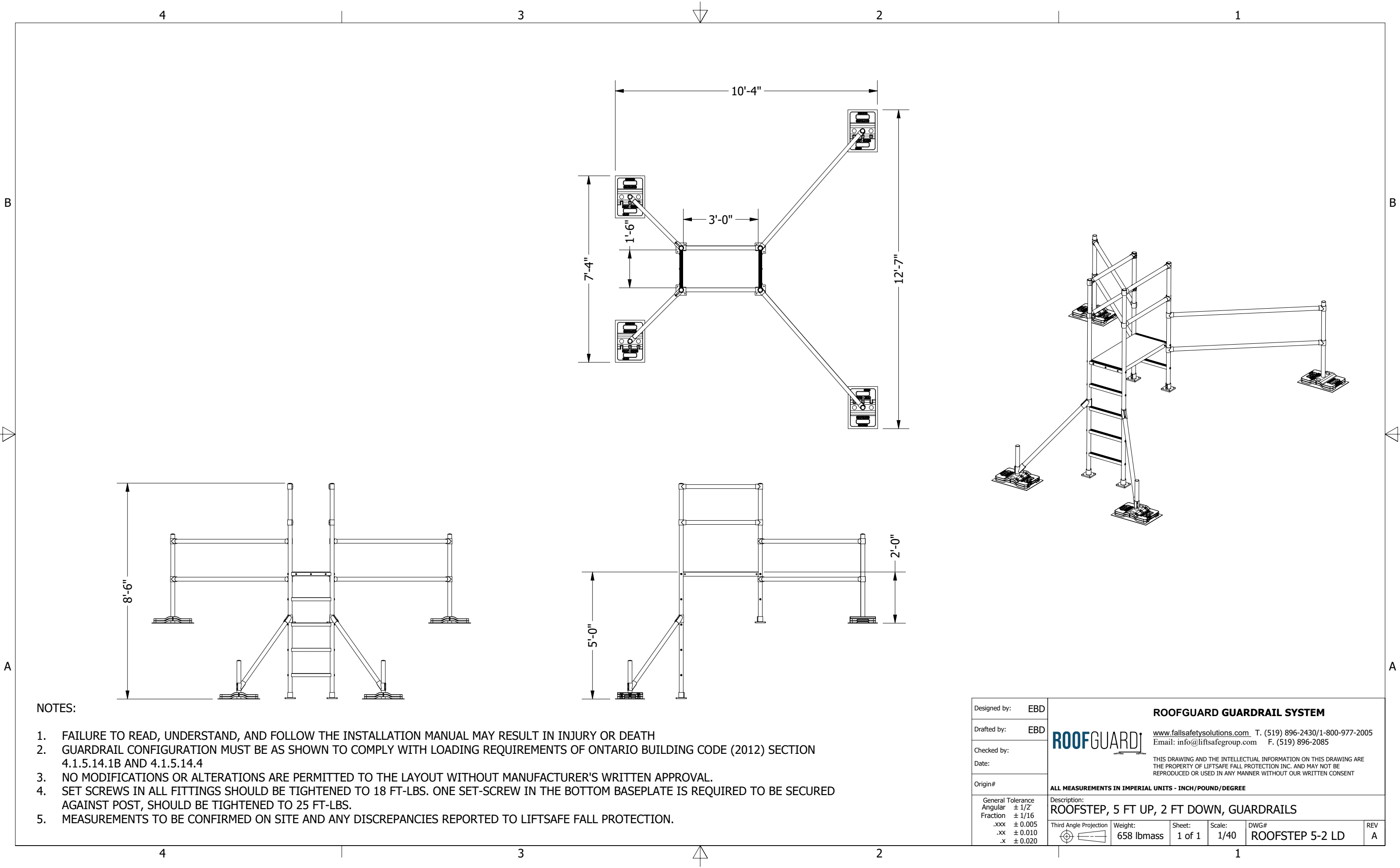
Designed by:	EBD	ROOFGUARD GUARDRAIL SYSTEM				
Drafted by:	EBD	ROOFGUARD! www.fallsafetysolutions.com T. (519) 896-2430/1-800-977-2005 Email: info@liftsafegroup.com F. (519) 896-2085				
Checked by:		THIS DRAWING AND THE INTELLECTUAL INFORMATION ON THIS DRAWING ARE THE PROPERTY OF LIFTSAFE FALL PROTECTION INC. AND MAY NOT BE REPRODUCED OR USED IN ANY MANNER WITHOUT OUR WRITTEN CONSENT				
Date:						
Origin#		ALL MEASUREMENTS IN IMPERIAL UNITS - INCH/POUND/DEGREE				
General Tolerance	± 1/2"	Description:				
Angular	± 1/16	ROOFSTEP, 4 FT UP, 3 FT DOWN, GUARDRAILS				
Fraction	± 0.005	Third Angle Projection	Weight:	Sheet:	Scale:	DWG#
.xxx	± 0.010		658 lbmass	1 of 1	1/40	ROOFSTEP 4-3 LD
.xx	± 0.020					REV
.x						A



NOTES:

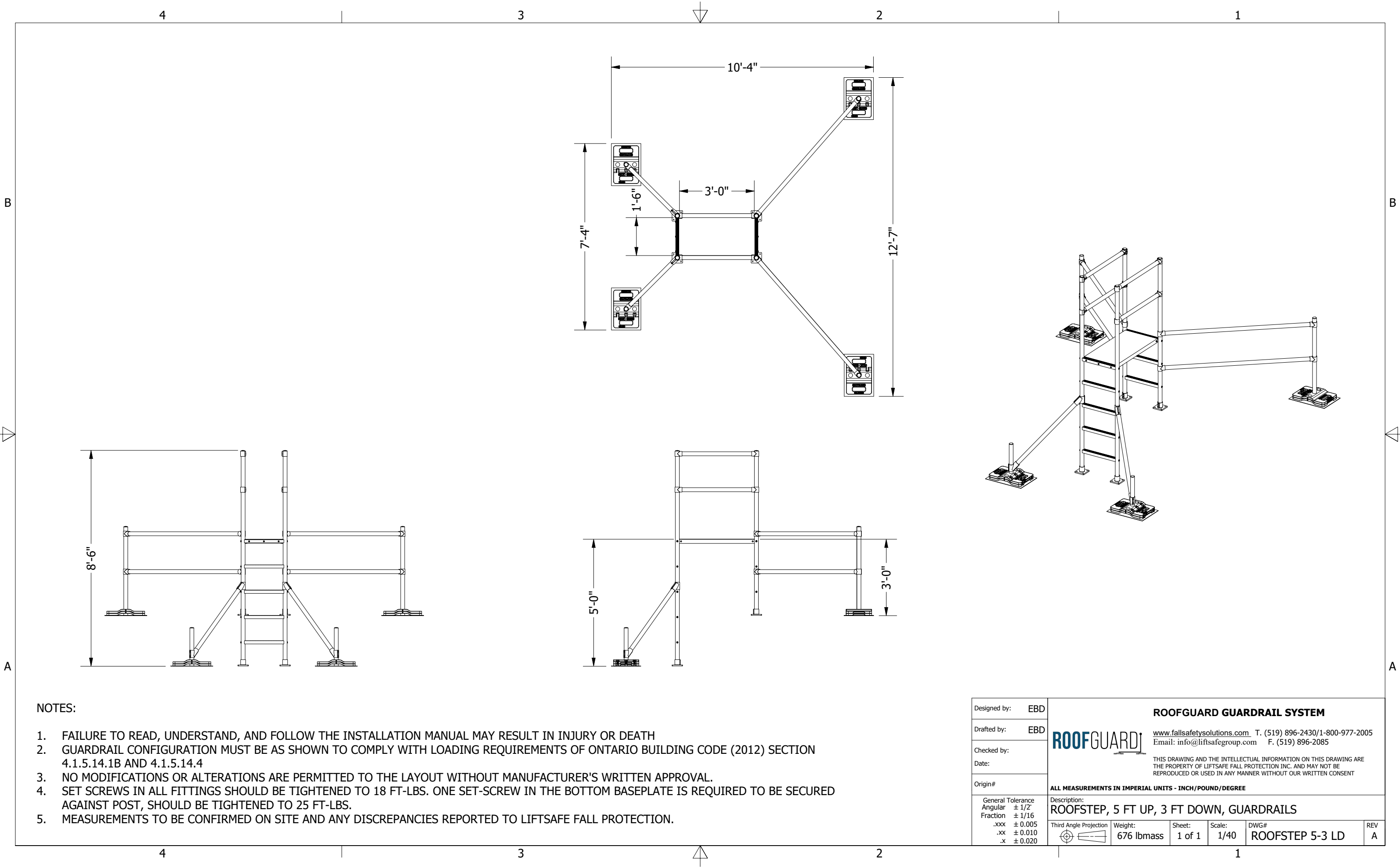
1. FAILURE TO READ, UNDERSTAND, AND FOLLOW THE INSTALLATION MANUAL MAY RESULT IN INJURY OR DEATH
2. GUARDRAIL CONFIGURATION MUST BE AS SHOWN TO COMPLY WITH LOADING REQUIREMENTS OF ONTARIO BUILDING CODE (2012) SECTION 4.1.5.14.1B AND 4.1.5.14.4
3. NO MODIFICATIONS OR ALTERATIONS ARE PERMITTED TO THE LAYOUT WITHOUT MANUFACTURER'S WRITTEN APPROVAL.
4. SET SCREWS IN ALL FITTINGS SHOULD BE TIGHTENED TO 18 FT-LBS. ONE SET-SCREW IN THE BOTTOM BASEPLATE IS REQUIRED TO BE SECURED AGAINST POST, SHOULD BE TIGHTENED TO 25 FT-LBS.
5. MEASUREMENTS TO BE CONFIRMED ON SITE AND ANY DISCREPANCIES REPORTED TO LIFTSAFE FALL PROTECTION.

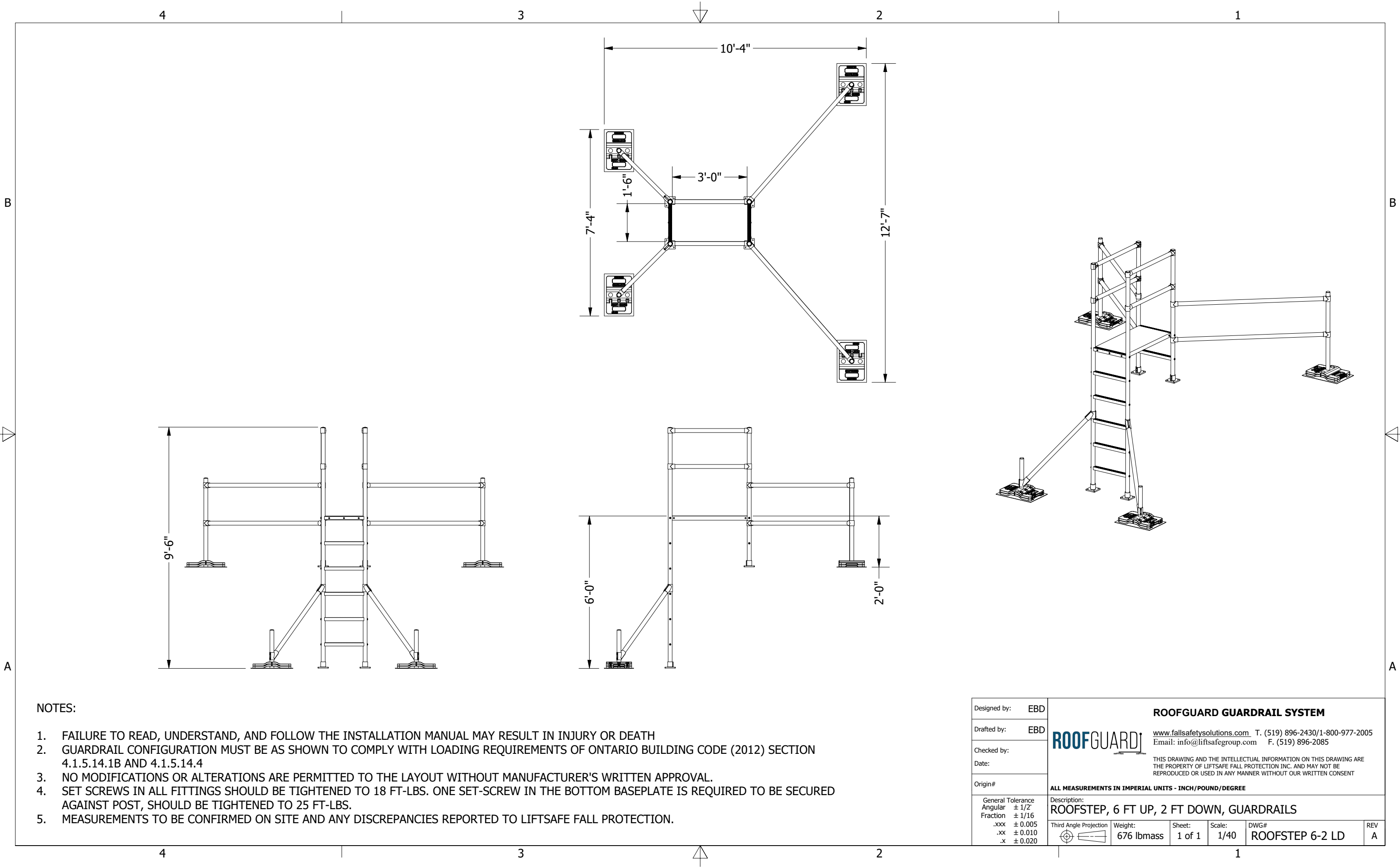
Designed by:	EBD	ROOFGUARD GUARDRAIL SYSTEM				
Drafted by:	EBD	ROOFGUARD <small>www.fallsafetysolutions.com T. (519) 896-2430/1-800-977-2005 Email: info@liftsafegroup.com F. (519) 896-2085</small>				
Checked by:		<small>THIS DRAWING AND THE INTELLECTUAL INFORMATION ON THIS DRAWING ARE THE PROPERTY OF LIFTSAFE FALL PROTECTION INC. AND MAY NOT BE REPRODUCED OR USED IN ANY MANNER WITHOUT OUR WRITTEN CONSENT</small>				
Date:						
Origin#		ALL MEASUREMENTS IN IMPERIAL UNITS - INCH/POUND/DEGREE				
General Tolerance	± 1/2"	Description: ROOFSTEP, 5 FT UP, 1 FT DOWN, GUARDRAILS				
Angular	± 1/16					
Fraction	± 0.005					
.xxx	± 0.010					
.xx	± 0.020					
.x		Third Angle Projection	Weight: 641 lbmass	Sheet: 1 of 1	Scale: 1/40	DWG# ROOFSTEP 5-1 LD
						REV A



- NOTES:
- 1. FAILURE TO READ, UNDERSTAND, AND FOLLOW THE INSTALLATION MANUAL MAY RESULT IN INJURY OR DEATH
 - 2. GUARDRAIL CONFIGURATION MUST BE AS SHOWN TO COMPLY WITH LOADING REQUIREMENTS OF ONTARIO BUILDING CODE (2012) SECTION 4.1.5.14.1B AND 4.1.5.14.4
 - 3. NO MODIFICATIONS OR ALTERATIONS ARE PERMITTED TO THE LAYOUT WITHOUT MANUFACTURER'S WRITTEN APPROVAL.
 - 4. SET SCREWS IN ALL FITTINGS SHOULD BE TIGHTENED TO 18 FT-LBS. ONE SET-SCREW IN THE BOTTOM BASEPLATE IS REQUIRED TO BE SECURED AGAINST POST, SHOULD BE TIGHTENED TO 25 FT-LBS.
 - 5. MEASUREMENTS TO BE CONFIRMED ON SITE AND ANY DISCREPANCIES REPORTED TO LIFTSAFE FALL PROTECTION.

Designed by:	EBD	<div>ROOFGUARD</div> <div>ROOFGUARD GUARDRAIL SYSTEM</div> <div>www.fallsafetysolutions.com T. (519) 896-2430/1-800-977-2005 Email: info@liftsafe.com F. (519) 896-2085</div> <div>THIS DRAWING AND THE INTELLECTUAL INFORMATION ON THIS DRAWING ARE THE PROPERTY OF LIFTSAFE FALL PROTECTION INC. AND MAY NOT BE REPRODUCED OR USED IN ANY MANNER WITHOUT OUR WRITTEN CONSENT</div>					
Drafted by:	EBD						
Checked by:							
Date:							
Origin#		ALL MEASUREMENTS IN IMPERIAL UNITS - INCH/POUND/DEGREE					
General Tolerance	± 1/2"	Description: ROOFSTEP, 5 FT UP, 2 FT DOWN, GUARDRAILS					
Angular	± 1/16						
Fraction	± 0.005						
.xxx	± 0.010						
.xx	± 0.020						
.x		Third Angle Projection	Weight: 658 lbmass	Sheet: 1 of 1	Scale: 1/40	DWG# ROOFSTEP 5-2 LD	REV A





- NOTES:
- 1. FAILURE TO READ, UNDERSTAND, AND FOLLOW THE INSTALLATION MANUAL MAY RESULT IN INJURY OR DEATH
 - 2. GUARDRAIL CONFIGURATION MUST BE AS SHOWN TO COMPLY WITH LOADING REQUIREMENTS OF ONTARIO BUILDING CODE (2012) SECTION 4.1.5.14.1B AND 4.1.5.14.4
 - 3. NO MODIFICATIONS OR ALTERATIONS ARE PERMITTED TO THE LAYOUT WITHOUT MANUFACTURER'S WRITTEN APPROVAL.
 - 4. SET SCREWS IN ALL FITTINGS SHOULD BE TIGHTENED TO 18 FT-LBS. ONE SET-SCREW IN THE BOTTOM BASEPLATE IS REQUIRED TO BE SECURED AGAINST POST, SHOULD BE TIGHTENED TO 25 FT-LBS.
 - 5. MEASUREMENTS TO BE CONFIRMED ON SITE AND ANY DISCREPANCIES REPORTED TO LIFTSAFE FALL PROTECTION.

Designed by:	EBD	<div>ROOFGUARD GUARDRAIL SYSTEM</div> <div><div><div>ROOFGUARD</div><div></div></div><div><div>www.fallsafetysolutions.com</div><div>T. (519) 896-2430/1-800-977-2005</div><div>Email: info@liftsafe.com</div><div>F. (519) 896-2085</div></div><div>THIS DRAWING AND THE INTELLECTUAL INFORMATION ON THIS DRAWING ARE THE PROPERTY OF LIFTSAFE FALL PROTECTION INC. AND MAY NOT BE REPRODUCED OR USED IN ANY MANNER WITHOUT OUR WRITTEN CONSENT</div></div>					
Drafted by:	EBD						
Checked by:							
Date:							
Origin#		ALL MEASUREMENTS IN IMPERIAL UNITS - INCH/POUND/DEGREE					
General Tolerance	± 1/2"	Description: ROOFSTEP, 6 FT UP, 2 FT DOWN, GUARDRAILS					
Angular	± 1/16						
Fraction	± 0.005						
.xxx	± 0.010						
.xx	± 0.020						
.x		Third Angle Projection	Weight: 676 lbmass	Sheet: 1 of 1	Scale: 1/40	DWG# ROOFSTEP 6-2 LD	REV A