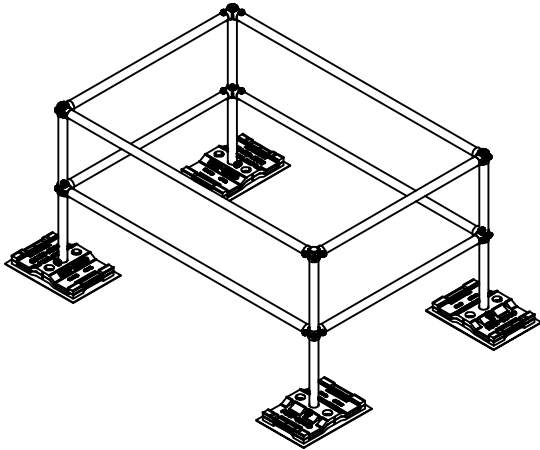




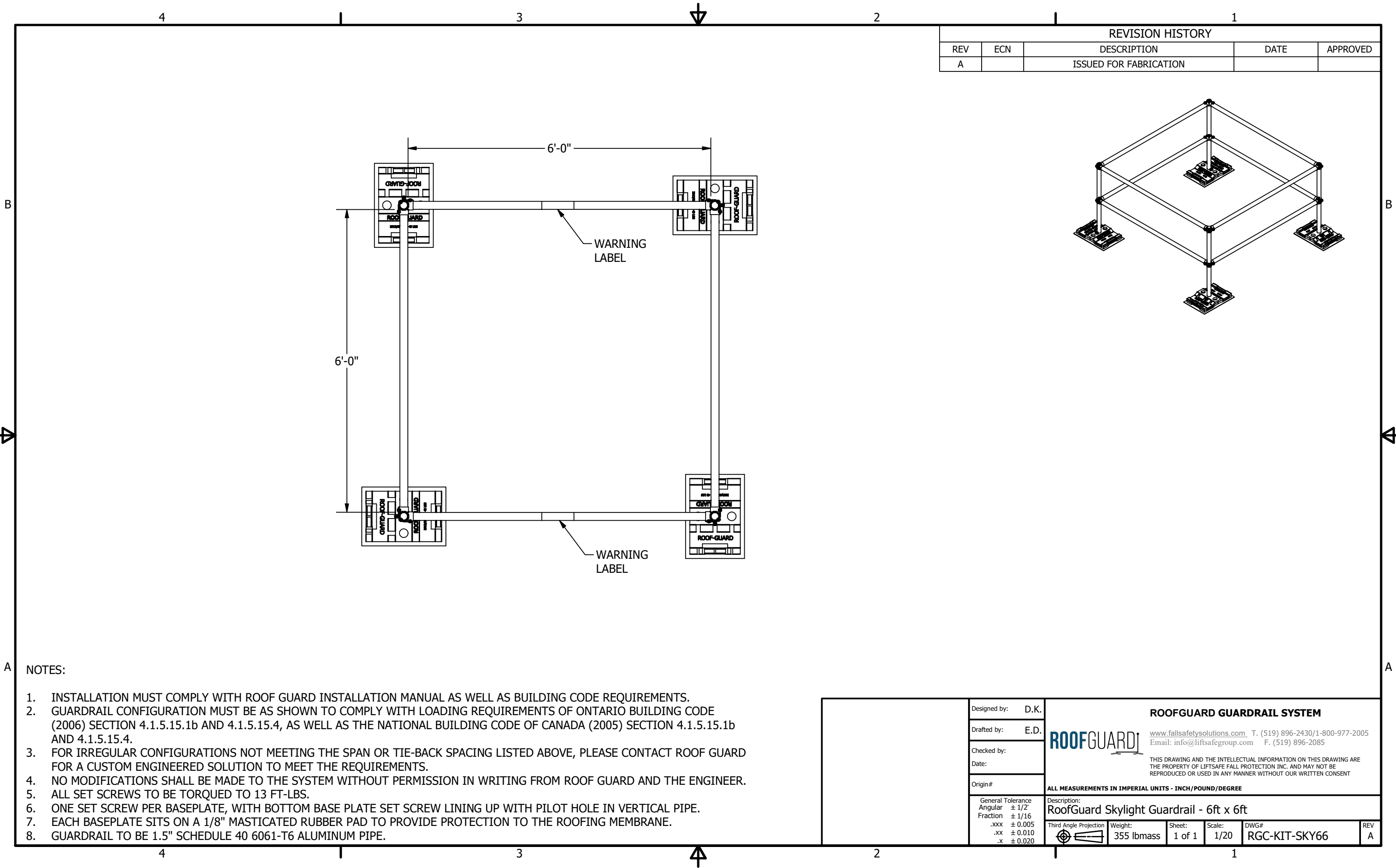
REVISION HISTORY				
REV	ECN	DESCRIPTION	DATE	APPROVED
A		ISSUED FOR FABRICATION		



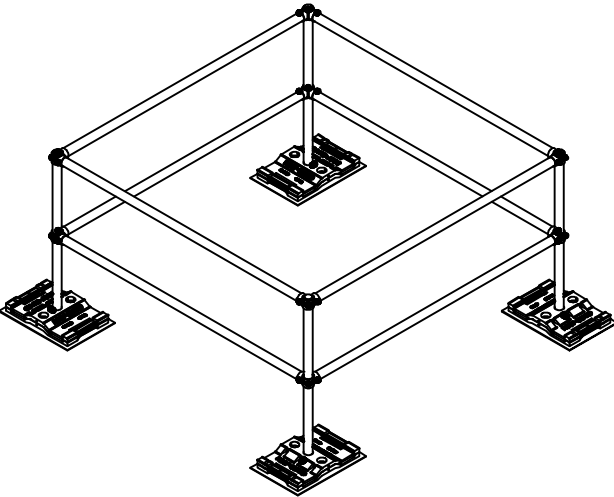
NOTES:

1. INSTALLATION MUST COMPLY WITH ROOF GUARD INSTALLATION MANUAL AS WELL AS BUILDING CODE REQUIREMENTS.
2. GUARDRAIL CONFIGURATION MUST BE AS SHOWN TO COMPLY WITH LOADING REQUIREMENTS OF ONTARIO BUILDING CODE (2006) SECTION 4.1.5.15.1b AND 4.1.5.15.4, AS WELL AS THE NATIONAL BUILDING CODE OF CANADA (2005) SECTION 4.1.5.15.1b AND 4.1.5.15.4.
3. FOR IRREGULAR CONFIGURATIONS NOT MEETING THE SPAN OR TIE-BACK SPACING LISTED ABOVE, PLEASE CONTACT ROOF GUARD FOR A CUSTOM ENGINEERED SOLUTION TO MEET THE REQUIREMENTS.
4. NO MODIFICATIONS SHALL BE MADE TO THE SYSTEM WITHOUT PERMISSION IN WRITING FROM ROOF GUARD AND THE ENGINEER.
5. ALL SET SCREWS TO BE TORQUED TO 13 FT-LBS.
6. ONE SET SCREW PER BASEPLATE, WITH BOTTOM BASE PLATE SET SCREW LINING UP WITH PILOT HOLE IN VERTICAL PIPE.
7. EACH BASEPLATE SITS ON A 1/8" MASTICATED RUBBER PAD TO PROVIDE PROTECTION TO THE ROOFING MEMBRANE.
8. GUARDRAIL TO BE 1.5" SCHEDULE 40 6061-T6 ALUMINUM PIPE.

Designed by: D.K.	<div>ROOFGUARD GUARDRAIL SYSTEM</div> <div><div><div>ROOFGUARD</div><div></div></div><div><div>www.fallsafetysolutions.com T. (519) 896-2430/1-800-977-2005</div><div>Email: info@liftsafegroup.com F. (519) 896-2085</div></div><div>THIS DRAWING AND THE INTELLECTUAL INFORMATION ON THIS DRAWING ARE THE PROPERTY OF LIFTSAFE FALL PROTECTION INC. AND MAY NOT BE REPRODUCED OR USED IN ANY MANNER WITHOUT OUR WRITTEN CONSENT</div></div>				
Drafted by: E.D.					
Checked by:					
Date:					
Origin#	ALL MEASUREMENTS IN IMPERIAL UNITS - INCH/POUND/DEGREE				
Description:					
RoofGuard Skylight Guardrail - 4ft x 6ft					
General Tolerance	Third Angle Projection	Weight:	Sheet:	Scale:	DWG#
Angular ± 1/2°		348 lbmass	1 of 1	1/20	RGC-KIT-SKY64
Fraction ± 1/16					
.xxx ± 0.005					
.xx ± 0.010					
.x ± 0.020					
					REV A





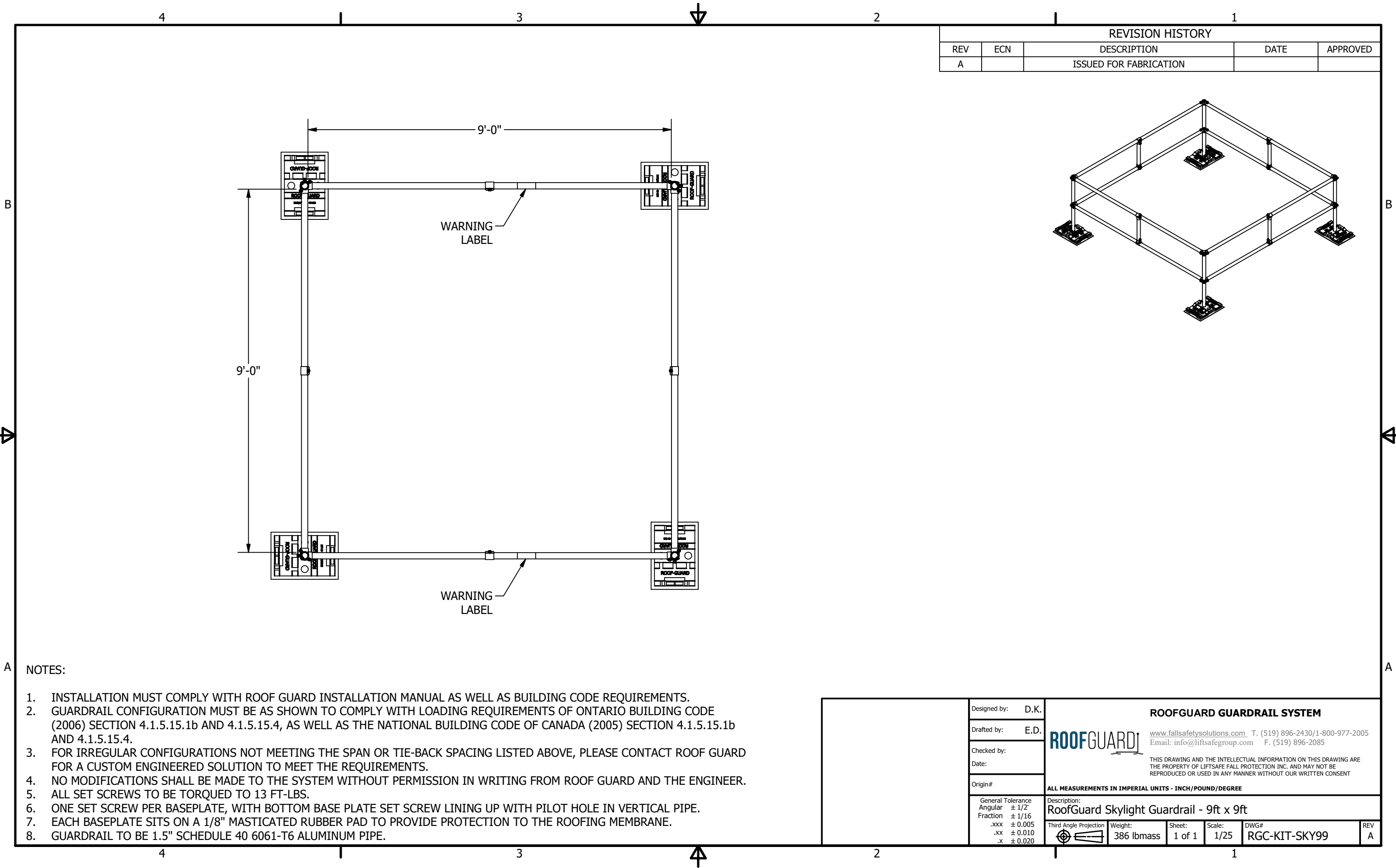
REVISION HISTORY				
REV	ECN	DESCRIPTION	DATE	APPROVED
A		ISSUED FOR FABRICATION		



NOTES:

1. INSTALLATION MUST COMPLY WITH ROOF GUARD INSTALLATION MANUAL AS WELL AS BUILDING CODE REQUIREMENTS.
2. GUARDRAIL CONFIGURATION MUST BE AS SHOWN TO COMPLY WITH LOADING REQUIREMENTS OF ONTARIO BUILDING CODE (2006) SECTION 4.1.5.15.1b AND 4.1.5.15.4, AS WELL AS THE NATIONAL BUILDING CODE OF CANADA (2005) SECTION 4.1.5.15.1b AND 4.1.5.15.4.
3. FOR IRREGULAR CONFIGURATIONS NOT MEETING THE SPAN OR TIE-BACK SPACING LISTED ABOVE, PLEASE CONTACT ROOF GUARD FOR A CUSTOM ENGINEERED SOLUTION TO MEET THE REQUIREMENTS.
4. NO MODIFICATIONS SHALL BE MADE TO THE SYSTEM WITHOUT PERMISSION IN WRITING FROM ROOF GUARD AND THE ENGINEER.
5. ALL SET SCREWS TO BE TORQUED TO 13 FT-LBS.
6. ONE SET SCREW PER BASEPLATE, WITH BOTTOM BASE PLATE SET SCREW LINING UP WITH PILOT HOLE IN VERTICAL PIPE.
7. EACH BASEPLATE SITS ON A 1/8" MASTICATED RUBBER PAD TO PROVIDE PROTECTION TO THE ROOFING MEMBRANE.
8. GUARDRAIL TO BE 1.5" SCHEDULE 40 6061-T6 ALUMINUM PIPE.

Designed by: D.K. Drafted by: E.D. Checked by: Date: Origin#	ROOFGUARD GUARDRAIL SYSTEM				
	 www.fallsafetysolutions.com T. (519) 896-2430/1-800-977-2005 Email: info@liftsafegroup.com F. (519) 896-2085				
	THIS DRAWING AND THE INTELLECTUAL INFORMATION ON THIS DRAWING ARE THE PROPERTY OF LIFSAFE FALL PROTECTION INC. AND MAY NOT BE REPRODUCED OR USED IN ANY MANNER WITHOUT OUR WRITTEN CONSENT				
	ALL MEASUREMENTS IN IMPERIAL UNITS - INCH/POUND/DEGREE				
	Description: RoofGuard Skylight Guardrail - 6ft x 6ft				
General Tolerance Angular ± 1/2° Fraction ± 1/16 .xxx ± 0.005 .xx ± 0.010 .x ± 0.020	Third Angle Projection 	Weight: 355 lbmass	Sheet: 1 of 1	Scale: 1/20	DWG# RGC-KIT-SKY66 REV A



REVISION HISTORY				
REV	ECN	DESCRIPTION	DATE	APPROVED
A		ISSUED FOR FABRICATION		

NOTES:

1. INSTALLATION MUST COMPLY WITH ROOF GUARD INSTALLATION MANUAL AS WELL AS BUILDING CODE REQUIREMENTS.
2. GUARDRAIL CONFIGURATION MUST BE AS SHOWN TO COMPLY WITH LOADING REQUIREMENTS OF ONTARIO BUILDING CODE (2006) SECTION 4.1.5.15.1b AND 4.1.5.15.4, AS WELL AS THE NATIONAL BUILDING CODE OF CANADA (2005) SECTION 4.1.5.15.1b AND 4.1.5.15.4.
3. FOR IRREGULAR CONFIGURATIONS NOT MEETING THE SPAN OR TIE-BACK SPACING LISTED ABOVE, PLEASE CONTACT ROOF GUARD FOR A CUSTOM ENGINEERED SOLUTION TO MEET THE REQUIREMENTS.
4. NO MODIFICATIONS SHALL BE MADE TO THE SYSTEM WITHOUT PERMISSION IN WRITING FROM ROOF GUARD AND THE ENGINEER.
5. ALL SET SCREWS TO BE TORQUED TO 13 FT-LBS.
6. ONE SET SCREW PER BASEPLATE, WITH BOTTOM BASE PLATE SET SCREW LINING UP WITH PILOT HOLE IN VERTICAL PIPE.
7. EACH BASEPLATE SITS ON A 1/8" MASTICATED RUBBER PAD TO PROVIDE PROTECTION TO THE ROOFING MEMBRANE.
8. GUARDRAIL TO BE 1.5" SCHEDULE 40 6061-T6 ALUMINUM PIPE.

Designed by: D.K. Drafted by: E.D. Checked by: Date: Origin#	ROOFGUARD GUARDRAIL SYSTEM				
	ROOFGUARD <small>www.fallsafetysolutions.com T. (519) 896-2430/1-800-977-2005 Email: info@liftsafegroup.com F. (519) 896-2085</small>				
	<small>THIS DRAWING AND THE INTELLECTUAL INFORMATION ON THIS DRAWING ARE THE PROPERTY OF LIFTSAFE FALL PROTECTION INC. AND MAY NOT BE REPRODUCED OR USED IN ANY MANNER WITHOUT OUR WRITTEN CONSENT</small>				
	ALL MEASUREMENTS IN IMPERIAL UNITS - INCH/POUND/DEGREE				
Description: RoofGuard Skylight Guardrail - 9ft x 9ft					
General Tolerance Angular ± 1/2° Fraction ± 1/16 .xxx ± 0.005 .xx ± 0.010 .x ± 0.020	Third Angle Projection	Weight: 386 lbmass	Sheet: 1 of 1	Scale: 1/25	DWG# RGC-KIT-SKY99
					REV A