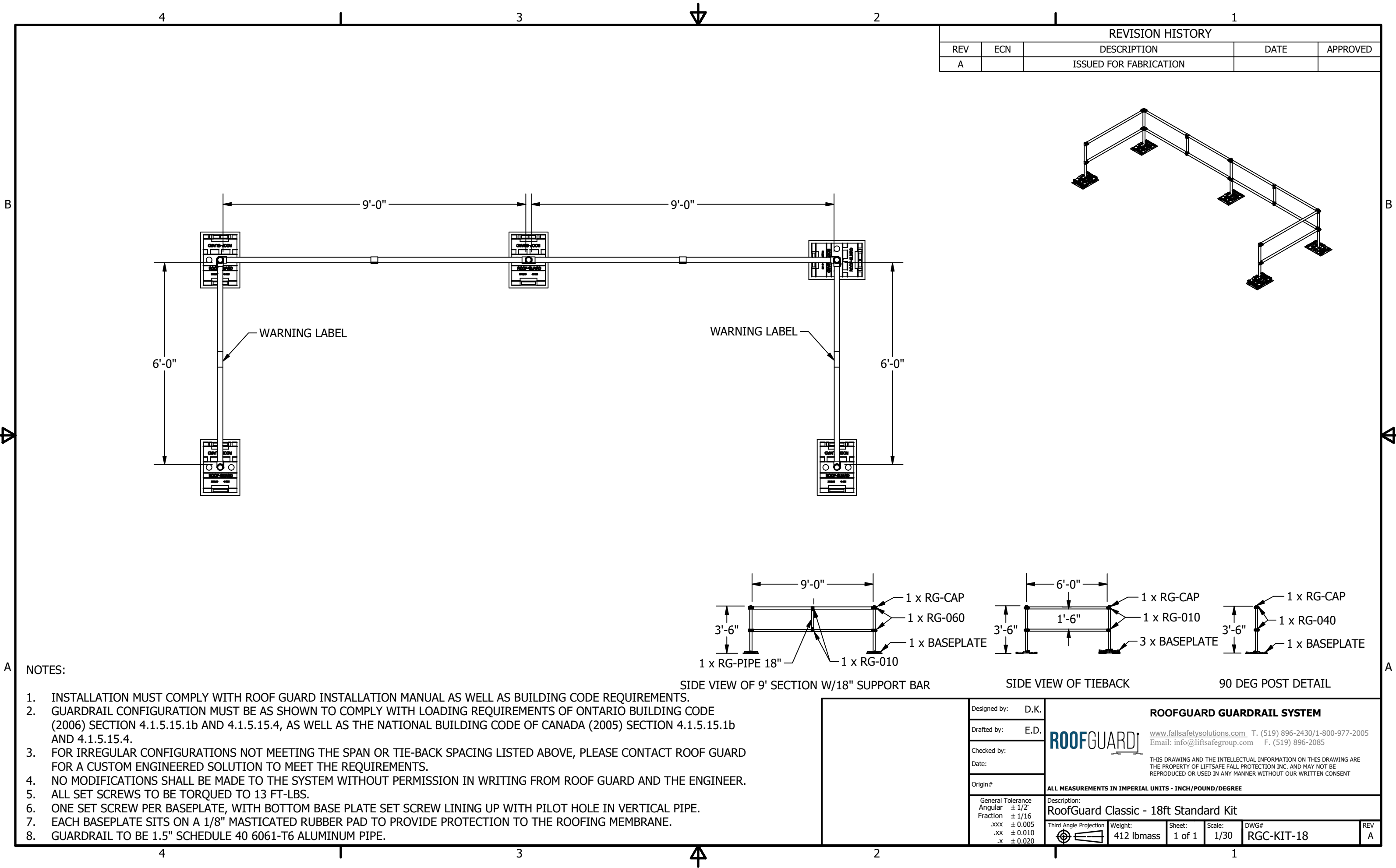


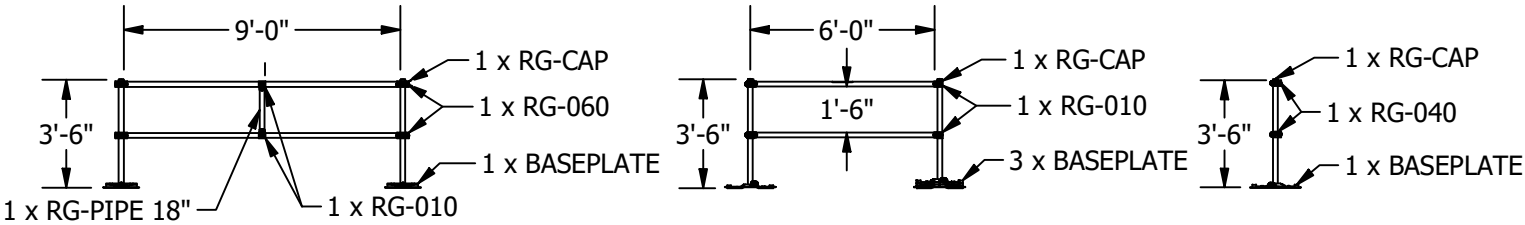
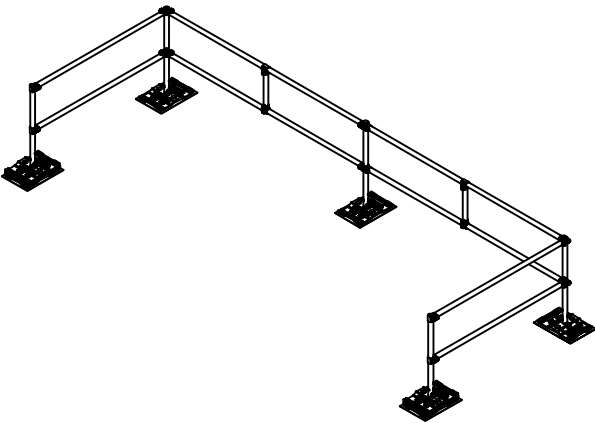
NOTES:

1. INSTALLATION MUST COMPLY WITH ROOF GUARD INSTALLATION MANUAL AS WELL AS BUILDING CODE REQUIREMENTS.
2. GUARDRAIL CONFIGURATION MUST BE AS SHOWN TO COMPLY WITH LOADING REQUIREMENTS OF ONTARIO BUILDING CODE (2006) SECTION 4.1.5.15.1b AND 4.1.5.15.4, AS WELL AS THE NATIONAL BUILDING CODE OF CANADA (2005) SECTION 4.1.5.15.1b AND 4.1.5.15.4.
3. FOR IRREGULAR CONFIGURATIONS NOT MEETING THE SPAN OR TIE-BACK SPACING LISTED ABOVE, PLEASE CONTACT ROOF GUARD FOR A CUSTOM ENGINEERED SOLUTION TO MEET THE REQUIREMENTS.
4. NO MODIFICATIONS SHALL BE MADE TO THE SYSTEM WITHOUT PERMISSION IN WRITING FROM ROOF GUARD AND THE ENGINEER.
5. ALL SET SCREWS TO BE TORQUED TO 13 FT-LBS.
6. ONE SET SCREW PER BASEPLATE, WITH BOTTOM BASE PLATE SET SCREW LINING UP WITH PILOT HOLE IN VERTICAL PIPE.
7. EACH BASEPLATE SITS ON A 1/8" MASTICATED RUBBER PAD TO PROVIDE PROTECTION TO THE ROOFING MEMBRANE.
8. GUARDRAIL TO BE 1.5" SCHEDULE 40 6061-T6 ALUMINUM PIPE.

Designed by: D.K.	<b>ROOFGUARD GUARDRAIL SYSTEM</b>  www.fallsafetysolutions.com T. (519) 896-2430/1-800-977-2005 Email: info@liftsafegroup.com F. (519) 896-2085 <small>THIS DRAWING AND THE INTELLECTUAL INFORMATION ON THIS DRAWING ARE THE PROPERTY OF LIFSAFEGROUP INC. AND MAY NOT BE REPRODUCED OR USED IN ANY MANNER WITHOUT OUR WRITTEN CONSENT</small>				
Drafted by: E.D.					
Checked by:					
Date:					
Origin#	<b>ALL MEASUREMENTS IN IMPERIAL UNITS - INCH/POUND/DEGREE</b>				
General Tolerance Angular ± 1/2° Fraction ± 1/16 .xxx ± 0.005 .xx ± 0.010 .x ± 0.020	Description: <b>RoofGuard Classic - 12ft Standard Kit</b>				
Third Angle Projection	Weight: 397 lbmass	Sheet: 1 of 1	Scale: 1/30	DWG# RGC-KIT-12	REV A



REVISION HISTORY				
REV	ECN	DESCRIPTION	DATE	APPROVED
A		ISSUED FOR FABRICATION		



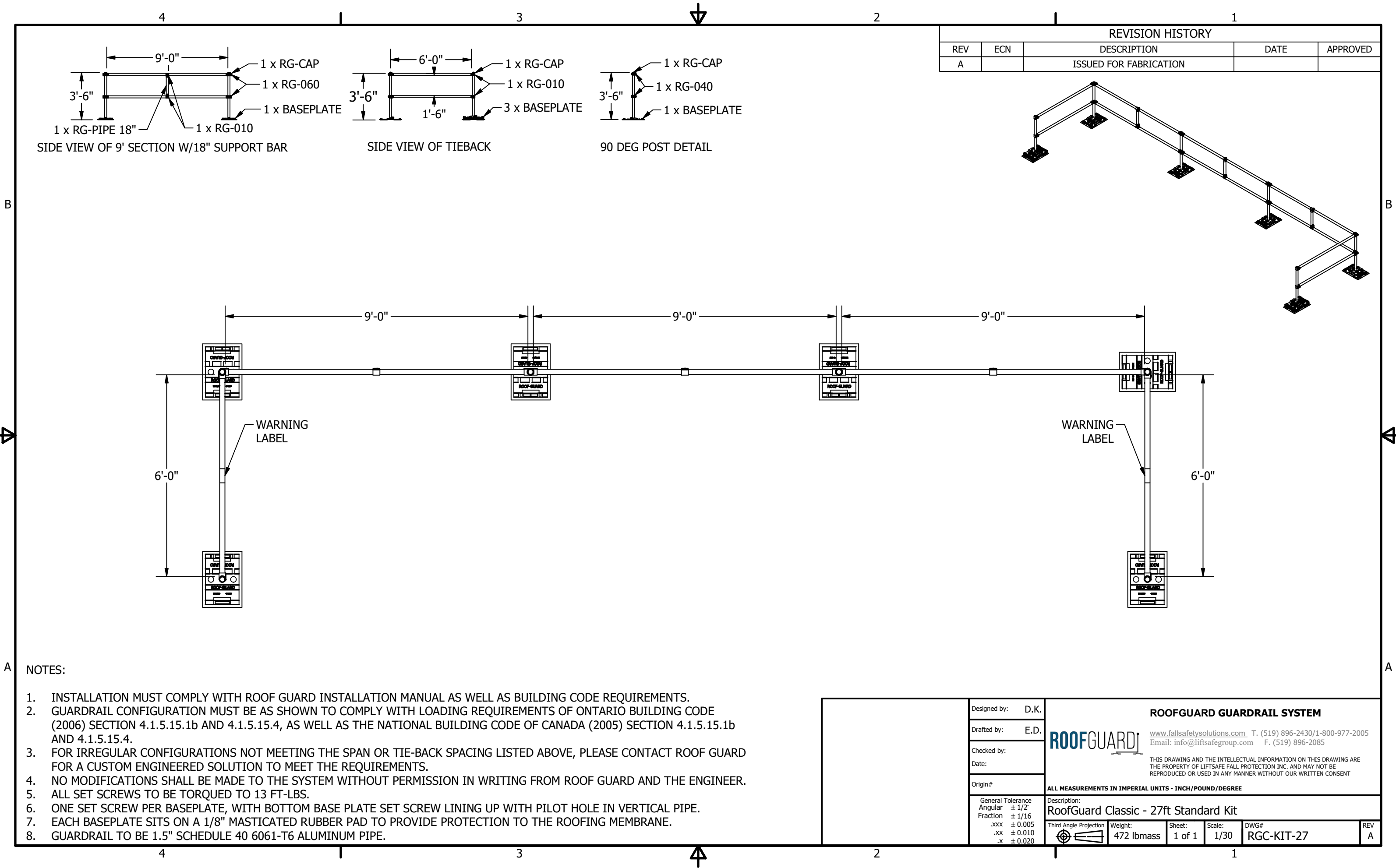
SIDE VIEW OF 9' SECTION W/18" SUPPORT BAR

SIDE VIEW OF TIEBACK

90 DEG POST DETAIL

- NOTES:
1. INSTALLATION MUST COMPLY WITH ROOF GUARD INSTALLATION MANUAL AS WELL AS BUILDING CODE REQUIREMENTS.
  2. GUARDRAIL CONFIGURATION MUST BE AS SHOWN TO COMPLY WITH LOADING REQUIREMENTS OF ONTARIO BUILDING CODE (2006) SECTION 4.1.5.15.1b AND 4.1.5.15.4, AS WELL AS THE NATIONAL BUILDING CODE OF CANADA (2005) SECTION 4.1.5.15.1b AND 4.1.5.15.4.
  3. FOR IRREGULAR CONFIGURATIONS NOT MEETING THE SPAN OR TIE-BACK SPACING LISTED ABOVE, PLEASE CONTACT ROOF GUARD FOR A CUSTOM ENGINEERED SOLUTION TO MEET THE REQUIREMENTS.
  4. NO MODIFICATIONS SHALL BE MADE TO THE SYSTEM WITHOUT PERMISSION IN WRITING FROM ROOF GUARD AND THE ENGINEER.
  5. ALL SET SCREWS TO BE TORQUED TO 13 FT-LBS.
  6. ONE SET SCREW PER BASEPLATE, WITH BOTTOM BASE PLATE SET SCREW LINING UP WITH PILOT HOLE IN VERTICAL PIPE.
  7. EACH BASEPLATE SITS ON A 1/8" MASTICATED RUBBER PAD TO PROVIDE PROTECTION TO THE ROOFING MEMBRANE.
  8. GUARDRAIL TO BE 1.5" SCHEDULE 40 6061-T6 ALUMINUM PIPE.

Designed by: D.K. Drafted by: E.D. Checked by: Date: Origin#	<b>ROOFGUARD GUARDRAIL SYSTEM</b>			
	 <a href="http://www.fallsafetysolutions.com">www.fallsafetysolutions.com</a> T. (519) 896-2430/1-800-977-2005 Email: <a href="mailto:info@liftsafegroup.com">info@liftsafegroup.com</a> F. (519) 896-2085			
	THIS DRAWING AND THE INTELLECTUAL INFORMATION ON THIS DRAWING ARE THE PROPERTY OF LIFTSAFE FALL PROTECTION INC. AND MAY NOT BE REPRODUCED OR USED IN ANY MANNER WITHOUT OUR WRITTEN CONSENT			
	ALL MEASUREMENTS IN IMPERIAL UNITS - INCH/POUND/DEGREE			
	Description: RoofGuard Classic - 18ft Standard Kit			
General Tolerance Angular ± 1/2" Fraction ± 1/16 .xxx ± 0.005 .xx ± 0.010 .x ± 0.020	Third Angle Projection	Weight: 412 lbmass	Sheet: 1 of 1	Scale: 1/30
DWG# RGC-KIT-18			REV A	



NOTES:

1. INSTALLATION MUST COMPLY WITH ROOF GUARD INSTALLATION MANUAL AS WELL AS BUILDING CODE REQUIREMENTS.
2. GUARDRAIL CONFIGURATION MUST BE AS SHOWN TO COMPLY WITH LOADING REQUIREMENTS OF ONTARIO BUILDING CODE (2006) SECTION 4.1.5.15.1b AND 4.1.5.15.4, AS WELL AS THE NATIONAL BUILDING CODE OF CANADA (2005) SECTION 4.1.5.15.1b AND 4.1.5.15.4.
3. FOR IRREGULAR CONFIGURATIONS NOT MEETING THE SPAN OR TIE-BACK SPACING LISTED ABOVE, PLEASE CONTACT ROOF GUARD FOR A CUSTOM ENGINEERED SOLUTION TO MEET THE REQUIREMENTS.
4. NO MODIFICATIONS SHALL BE MADE TO THE SYSTEM WITHOUT PERMISSION IN WRITING FROM ROOF GUARD AND THE ENGINEER.
5. ALL SET SCREWS TO BE TORQUED TO 13 FT-LBS.
6. ONE SET SCREW PER BASEPLATE, WITH BOTTOM BASE PLATE SET SCREW LINING UP WITH PILOT HOLE IN VERTICAL PIPE.
7. EACH BASEPLATE SITS ON A 1/8" MASTICATED RUBBER PAD TO PROVIDE PROTECTION TO THE ROOFING MEMBRANE.
8. GUARDRAIL TO BE 1.5" SCHEDULE 40 6061-T6 ALUMINUM PIPE.

Designed by:	D.K.	<div><div>ROOFGUARD</div><div><p>www.fallsafetysolutions.com T. (519) 896-2430/1-800-977-2005 Email: info@liftsafegroup.com F. (519) 896-2085</p><p>THIS DRAWING AND THE INTELLECTUAL INFORMATION ON THIS DRAWING ARE THE PROPERTY OF LIFSAFEGROUP INC. AND MAY NOT BE REPRODUCED OR USED IN ANY MANNER WITHOUT OUR WRITTEN CONSENT</p></div></div>					
Drafted by:	E.D.						
Checked by:							
Date:							
Origin#		ALL MEASUREMENTS IN IMPERIAL UNITS - INCH/POUND/DEGREE					
General Tolerance	± 1/2"	Description: RoofGuard Classic - 27ft Standard Kit					
Angular	± 1/16						
Fraction	± 0.005						
.xxx	± 0.010						
.xx	± 0.020	Third Angle Projection	Weight: 472 lbmass	Sheet: 1 of 1	Scale: 1/30	DWG# RGC-KIT-27	REV A